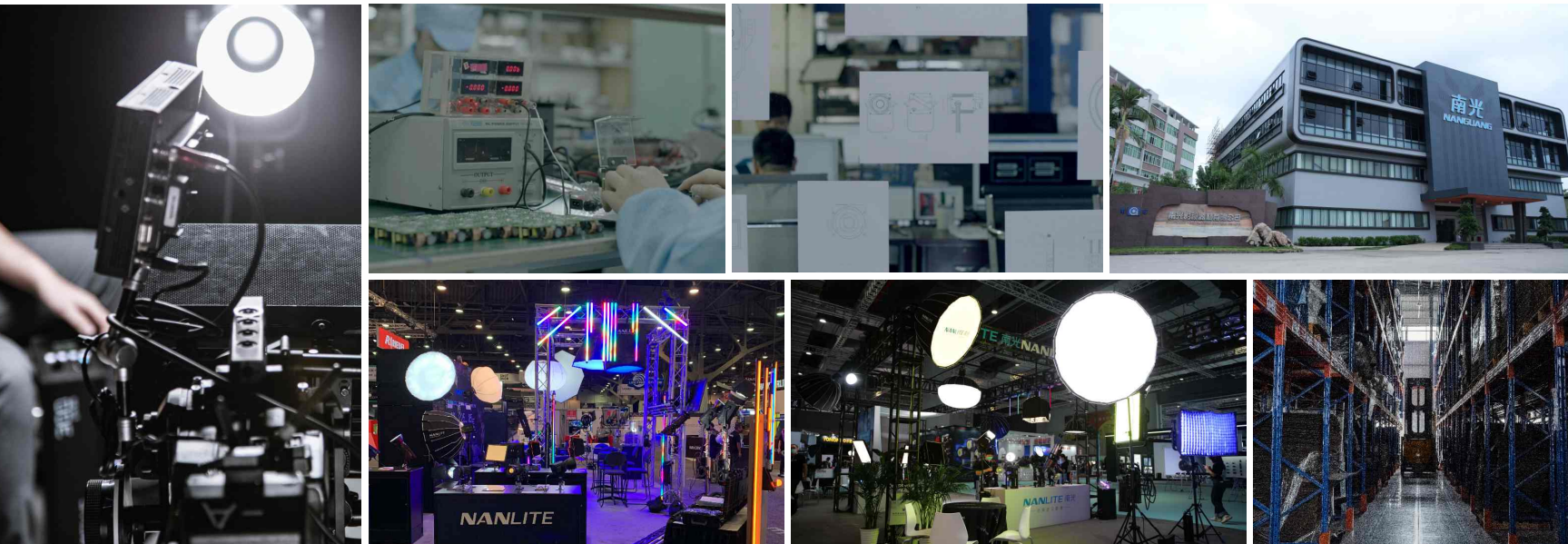


[WWW.NANLITE.COM](http://WWW.NANLITE.COM)

**NANLITE**

*Guangdong NanGuang Photo&Video Systems Co., Ltd.*



# NANLITE

The way we capture images is evolving. Content creation is more approachable and diverse than ever before. Projects that could only be accomplished by large studios and huge budgets are now in reach of anyone with a dream and the dedication of chasing the dream. It's time to redefine lighting and let it evolve to the next level. With this in mind, NANGUANG, a company passionately dedicated to the lighting industry for more than 30 years, has started a new brand--NANLITE, since April 2019.

At NANLITE, we strive to design lighting products that offer image-makers new possibilities and push them to expand their creative horizons as we vow to expand ours as well. We listen to customers' feedback, focus on design details, and optimize the user experience of our products. We stand behind all of our products and provide the best technical support to help customers accomplish their vision effortlessly.

Our long history has taught us how to carefully select our materials, continually improve our manufacturing processes, and maintain strict quality control on all of our products. We hold ourselves to the highest standards in manufacturing and design in hopes that the lights we produce will ignite new ideas for image-making. We believe the value of our lights is not just in the lighting itself; it's more about helping creatives fulfill their vision. We hope that, with our lighting, a creator's only limitation will be their imagination.

## CONTENTS

01-15	Forza Series LED Spot Light
16-20	PJ Series Projection Attachment
21-24	PavoSlim Series LED Panel Light
25-34	PavoTube Series LED RGBWW Tube Light
35-37	PavoBulb Series LED RGBWW Bulb
38-41	FC Series LED Spot Light
42-48	FS Series LED Studio Light
49-51	MixPanel Series LED RGBWW Panel Light
52-54	Mix Series LED RGBWW Light
55-56	LumiPad Series LED Soft Panel Light
57-61	Compac Series LED Studio Light
62-63	LitoLite 5C LED Pocket Light
64-67	halo Series LED Ring Light
68-72	Lighting Modifiers & Accessories
72-74	Carrying Case & Backdrop Elevator Series



# Forza Series LED Spot Light

Compact Design, Ultra Bright

# Forza FM Mount

Palm-sized, Lightweight Design, New Ecosystem

## Forza 60/60B II Daylight Bi-color

1. Small and compact with stunning output packed inside, illuminance level stands at 17,620lux/14,350lux@1m with reflector(at 5600K).
2. 72W rated power draw for both and variable CCT range of 2700K to 6500K for Forza 60B II.
3. Two output modes for Forza 60B II, maximum output mode and constant output mode.
4. Excellent color rendition:  
Forza 60 II: CRI/TLCI 95/98, TM-30 Rf Avg 93, TM-30 Rg Avg 103  
Forza 60B II: CRI/TLCI Avg 96/98, TM-30 Rf Avg 93, TM-30 Rg Avg 100
5. 11/12 built-in special effects with each parameter adjustable.
6. Classic UI of OLED display and tuning knobs with a MODE button.
7. Outstanding fan control with noise level lowers to 20dBA even with the fan rotating.
8. FM mount with Bowens mount compatibility added via an included adapter.
9. Power anywhere, run with AC adapter, 2 pcs NP-F batteries or a V-mount battery.
10. Firmware upgradeable via the USB-A port.



On-board



Remote Controller



NANLINK APP



DMX/RDM



### Includes

Light × 1, Power Adapter × 1, Power Cable 3M × 1, COB Protective Cap × 1, RF-FMM-45-S Reflector × 1, BT-BG-FZ60 Battery Grip × 1, AS-BA-FMM Bowens Adapter × 1, Carrying Bag × 1, User Manual × 1

# Forza 60C Full color

1. RGBLAC six-color system adding Lime / Amber / Cyan LED chips with RGB.
2. Ultra wide CCT range of 1800K-20000K and G/M adjustment.
3. Compact body with impeccable color rendition, scores average 96/95 for CRI/TLCI.
4. Multiple professional color modes: HSI / RGBW / XY modes for color calibration.
5. Built-in 15 effects: HUE Loop, CCT Loop, INT Loop, Flash, Pulse, Storm, Police Car, TV, Paparazzi, Candle/Fire, Disco, Bad Bulb, Firework, Explosion and Welding.
6. FM mount with Bowens mount compatibility added via an included adapter.
7. AC & DC power options with a battery grip for on-the-go shooting.
8. Firmware updatable via the USB-A port on the fixture.



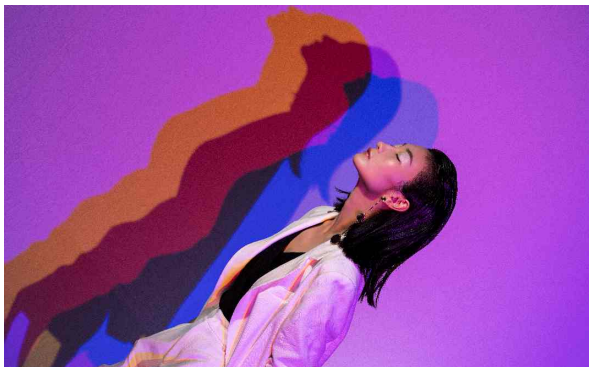
Forza 60C



On-board Remote Controller NANLINK APP DMX/RDM

## Includes

Light x 1, Power Adapter x 1, Power Cable 3M x 1, RF-FMM-45-S Reflector x 1, COB Protective Cap x 1, AS-BA-FMM Bowens Mount Adapter x 1, BT-BG-FZ60 Battery Grip x 1, Carrying Bag x 1, User Manual x 1



# Forza 150/150B Daylight Bi-color

1. Accurate color rendition owing to high score of average 96/98 on CRI/TLCI.
2. FM mount & Bowens mount compatible, endless light shaping possibilities.
3. 11/12 effects: CCT Loop(bi-color), INT Loop, Flash, Pulse, Storm, TV, Papparazzi, Candle/Fire,Bad Bulb, Firework, Explosion and Welding.
4. Firmware updatable via the USB port on the fixture.
5. Various options for power: run on either the included AC adapter or one 14.8V or 26V V-Mount battery (not included).



On-board



Remote Controller



NANLINK APP



DMX/RDM



Forza 150B

Forza 150

## Includes

Light x 1, Power Adapter x 1, Power Cable 4.5M x 1, Reflector x 1, AS-BA-FMM Bowens Adapter x 1, Carrying Bag x 1, User Manual x 1, DMX Reference Guide x 1



## FM Mount Accessories (Optional)



SB-FMM-60  
FMM 60 Softbox  
(EC-FMM60 Eggcrate: Optional)  
FM & Bowens Mount



LT-FMM-60  
Lantern Softbox 60  
FM & Bowens Mount



FL-11  
Fresnel Lens



RC-1  
Remote Controller



WS-RC-C2  
2.4G Remote Controller



AS-BA-FMM  
Bowens Adapter  
(included)

CB-DT/DC  
D-tap Cable  
for Forza 60 II/ 60B II/60C



CB-DMX-3.5C-1/2  
DMX Adapter Cable  
with 3.5mm Connector



BT-BA-SNP/DC  
Sony NP Battery Adapter  
for Forza 60 II/60B II/60C



BT-BA-V  
V-mount Battery Adapter  
with Clamp  
for Forza 60 II/60B II/60C



BH-FZ60-V  
V-mount Battery Grip  
for Forza 60 II/60B II/60C



BT-BG-FZ60  
Battery Grip for Forza 60 II/60B II/60C  
(suggested to work with NP-F970)  
(included)



BT-BG-XLR4  
V Mount Battery Grip  
with 4 Pin XLR Connector  
for Forza 150/150B



# Forza 60/60B II *II* Technical Data

Model	<i>Forza 60 II</i>	<i>Forza 60B II</i>
Rated Power	72W	
Input Voltage/Current	DC 15V/6A Max, AC 100-240V 50/60Hz	
CCT	5600K	2700K - 6500K
CRI / TLCI	95 / 98	Average 96 / Average 98
TM-30	Rf: Average 93 / Rg: Average 103	Rf: Average 93 / Rg: Average 100
Dimming	0-100%	
Control	On-board, Remote Controller, NANLINK APP, DMX/RDM	
Product Size	200 × 108 × 84mm / 7.87 × 4.25 × 3.31"	
Product Weight	0.84kg / 1.85lb	0.7kg / 1.54lb

## Illumination (lux / fc)

Model / CCT	<i>Forza 60 II</i>			<i>Forza 60B II (3200K)</i>			<i>Forza 60B II (5600K)</i>		
Distance	1M	2M	3M	1M	2M	3M	1M	2M	3M
Light Only	3420 lux 318 fc	854 lux 79 fc	414 lux 38 fc	2235 lux 208 fc	569 lux 53 fc	270 lux 25 fc	2577 lux 239 fc	649 lux 60 fc	308 lux 29 fc
With Reflector	17620 lux 1637 fc	3980 lux 370 fc	1651 lux 153 fc	12170 lux 1131 fc	2731 lux 254 fc	1182 lux 110 fc	14350 lux 1333 fc	3186 lux 296 fc	1381 lux 128 fc
With FL-11 Spot	41580 lux 3863 fc	9666 lux 898 fc	4039 lux 375 fc	30120 lux 2798 fc	6986 lux 649 fc	3045 lux 283 fc	34700 lux 3224 fc	8202 lux 762 fc	3563 lux 331 fc
With FL-11 Flood	9478 lux 881 fc	2150 lux 200 fc	973 lux 90 fc	5887 lux 547 fc	1464 lux 136 fc	665 lux 62 fc	6852 lux 637 fc	1725 lux 160 fc	769 lux 71 fc

# Forza 60C *Technical Data*

Model	<b>Forza 60C</b>
Rated Power	88W
Input Voltage/Current	DC 15V/6A Max, AC 100-240V 50/60Hz
CCT	1800K-20000K (G/M ±100)
CRI / TLCI	Average 96 / Average 95
TM-30	Rf: Average 92 / Rg: Average 100
Dimming	0-100%
Control	On-board, Remote Controller, NANLINK APP, DMX/RDM
Product Size	224 × 110 × 88mm / 8.82 x 4.33 x 3.46"
Product Weight	1.08kg / 2.38lb

## Illumination (lux / fc)

Distance	Light Only			With Reflector			With FL-11 Spot			With FL-11 Flood		
	1M	2M	3M	1M	2M	3M	1M	2M	3M	1M	2M	3M
2700K	5656 lux 525 fc	1402 lux 130 fc	631 lux 59 fc	12470 lux 1158 fc	2839 lux 264 fc	1238 lux 115 fc	35260 lux 3276 fc	8303 lux 771 fc	3539 lux 329 fc	10800 lux 1003 fc	2720 lux 253 fc	1222 lux 114 fc
5600K	5709 lux 530 fc	1425 lux 132 fc	646 lux 60 fc	12810 lux 1190 fc	2946 lux 274 fc	1283 lux 119 fc	37520 lux 3486 fc	8780 lux 816 fc	3804 lux 353 fc	11310 lux 1051 fc	2858 lux 266 fc	1279 lux 119 fc
7500K	5567 lux 517 fc	1388 lux 129 fc	630 lux 59 fc	12460 lux 1158 fc	2866 lux 266 fc	1254 lux 116 fc	36560 lux 3396 fc	8530 lux 792 fc	3712 lux 345 fc	11040 lux 1026 fc	2792 lux 259 fc	1250 lux 116 fc
R	1282 lux 119 fc	317 lux 29 fc	142 lux 13 fc	2886 lux 268 fc	656 lux 61 fc	290 lux 27 fc	9440 lux 877 fc	2171 lux 202 fc	935 lux 87 fc	2594 lux 241 fc	656 lux 61 fc	293 lux 27 fc
G	3855 lux 358 fc	953 lux 89 fc	428 lux 40 fc	8792 lux 817 fc	2016 lux 187 fc	876 lux 81 fc	24750 lux 2299 fc	5753 lux 534 fc	2503 lux 233 fc	7480 lux 695 fc	1879 lux 175 fc	838 lux 78 fc
B	520 lux 48 fc	129 lux 12 fc	59 lux 5 fc	1200 lux 111 fc	275 lux 26 fc	120 lux 11 fc	4940 lux 459 fc	790 lux 73 fc	340 lux 32 fc	1020 lux 95 fc	256 lux 24 fc	115 lux 11 fc

# Forza 150/150B *Technical Data*

Model	<b>Forza 150</b>	<b>Forza 150B</b>
Rated Power	170W	
Input Voltage/Current	DC 24V / 7.5A Max, AC 100-240V 50 / 60Hz	
CCT	5600K	2700K-6500K
CRI / TLCI	96 / 98	Average 96 / Average 98
TM-30	Rf: Average 93 / Rg: Average 101	Rf: Average 93 / Rg: Average 102
Dimming	0-100%	
Control	On-board, Remote Controller, NANLINK APP, DMX/RDM	
Product Size	227 × 133 × 115mm / 8.94 × 5.24 × 4.53"	247 × 133 × 115mm / 9.72 × 5.24 × 4.53"
Product Weight	1.36kg / 3.00lb	1.56kg / 3.44lb

## Illumination (lux / fc)

Model / CCT	<b>Forza 150</b>			<b>Forza 150B (3200K)</b>			<b>Forza 150B (5600K)</b>		
Distance	1M	2M	3M	1M	2M	3M	1M	2M	3M
Light Only	6870 lux 638 fc	1760 lux 164 fc	858 lux 80 fc	4170 lux 387 fc	1127 lux 105 fc	520 lux 48 fc	5121 lux 476 fc	1352 lux 126 fc	644 lux 60 fc
With Reflector	27960 lux 2597 fc	6655 lux 618 fc	2824 lux 262 fc	18860 lux 1752 fc	4084 lux 379 fc	1753 lux 163 fc	23130 lux 2149 fc	4826 lux 448 fc	2078 lux 193 fc
With FL-11 Spot	69200 lux 6429 fc	16800 lux 1561 fc	7658 lux 711 fc	45370 lux 4215 fc	10800 lux 1003 fc	4732 lux 440 fc	54290 lux 5044 fc	13050 lux 1212 fc	5721 lux 531 fc
With FL-11 Flood	17050 lux 1584 fc	4260 lux 396 fc	2009 lux 187 fc	10300 lux 957 fc	2630 lux 244 fc	1187 lux 110 fc	12460 lux 1158 fc	3150 lux 293 fc	1444 lux 134 fc

# Forza Bowens Mount

Compact Design · Powerful Output · Bowens Mount

## Forza 300/300B/500/500B II Daylight Bi-color

1. Wide CCT range of 2700K-6500K, G/M  $\pm 80$ , covering both 350W/560W/580W power draw.
2. Excellent color rendition, Forza 300/500 II: CRI/TLCI 96/97,  
Forza 300B/500B II: CRI/TLCI average 96/97.
3. New design control unit with power adapter incorporated inside and V-mount battery holder on both sides, providing AC and DC power solutions.
4. Curved yoke permits 360° adjustment, also with user-friendly one-sided locking mechanism.
5. With 11 effects for Forza 300 II/500 II, while 12 effects for Forza 300B II/500B II.
6. Adjustable 4 fan modes: SMART, FULL SPEED, LOW SPEED and OFF.
7. Support firmware update via built-in USB-A port.



On-board



Remote Controller



NANLINK APP



DMX/RDM

### Includes

Light  $\times$  1, Control Unit  $\times$  1, DC Connection Cable 3M  $\times$  1, AC Power Cable 6M  $\times$  1, Reflector  $\times$  1, COB Protective Cap  $\times$  1, Quick Release Clamp  $\times$  1, User Manual  $\times$  1, DMX Reference Guide  $\times$  1, Carrying Bag  $\times$  1

Item No.	Max Output	14.4-14.8V/12A Battery		26V/12A Battery
		one	two	two
<i>Forza 300 II/Forza 300B II</i>		45%	100%	/
<i>Forza 500 II/Forza 500B II</i>		/	60%	100%



# Forza 720/720B Daylight Bi-color

1. Outstanding luminance level, 800W AC Power Draw.
2. Wide CCT range of 2700-6500K for Forza 720B.
3. High color rendition scores: CRI 95, TLCI 96 for Forza 720, CRI average of 96, TLCI average of 97 for Forza 720B .
4. Two output modes of maximum output mode and constant output mode for Forza 720B.
5. Bowens mount fixtures with expanded choices of light shaping tools.
6. Curved yoke with 360° rotation, provide expanded angles for tilting down.
7. Quick release clamp and plate, greatly improves attaching to light stands and other objects.
8. Dual power supply solutions with longer connection cable and advanced power management system.
9. Comprehensive control methods, including on-board, remote controller, NANLINK APP, DMX/RDM.



On-board



Remote Controller



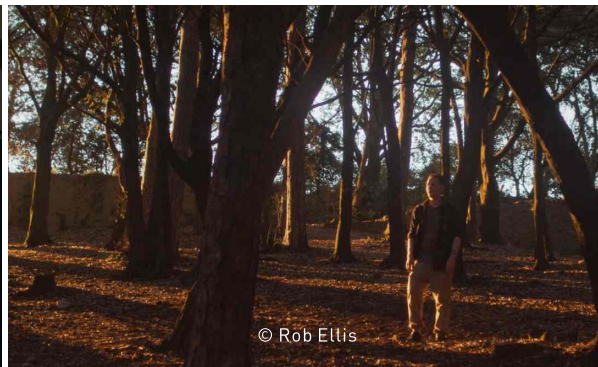
NANLINK APP



DMX/RDM

## Includes

Light × 1, Control Unit × 1, DC Connection Cable 5M × 1, AC Power Cable 4.5M × 1, Reflector × 1, COB Protective Cap × 1, Quick Release Clamp × 1, Carrying Bag × 1, User Manual × 1, DMX Reference Guide × 1



# Bowens Mount *Accessories (Optional)*



FL-20G Fresnel Lens  
for Forza 300 II/300B II/500 II/500B II



BT-V-14.8V160  
V-mount Battery 14.8V 160WH

BT-CGV-14.8V-1  
Battery Charger for Single 14.8V V-mount Battery



SB-ST-140x30 Strip Softbox  
SB-AS-110x45 Asymmetric Softbox  
SB-RT-90x60 Rectangle SoftBox  
EC-140x30/EC-110x45 Eggcrate



BT-V-26V230/BT-V-26V270  
V-mount Battery 26V 230WH/270WH

BT-CGV-26V-1/BT-CGV-26V-2  
Battery Charger for Single/Dual 26V V-mount Battery



LT-80/LT-120  
Lantern Softbox



CB-FZ-7.5M  
Forza 7.5M Connection Cable



CB-FZ-12M  
Forza 12M Connection Cable



SB-PR-90/120/150-Q Quick Setup Parabolic Softbox  
EC-PR90/120/150 Eggcrate



RC-1 Remote Controller



U-135DS / U-165DT / U-180ST Umbrella



WS-RC-C2 2.4G Remote Controller

# Forza 300/300B/500/500B II *II* Technical Data

Model	Forza 300 II	Forza 300B II	Forza 500 II	Forza 500B II
Rated Power	350W		560W	580W
Input Voltage/Current	DC (Battery)14.4V-14.8V/12A, AC 100-240V 50/60Hz		DC (Battery)14.4V-26V/12A, AC 100-240V 50/60Hz	
CCT	5600K (G/M ±80)	2700K-6500K (G/M ±80)	5600K (G/M ±80)	2700K-6500K (G/M ±80)
CRI / TLCI	96 / 97	Average 96 / Average 97	96 / 97	Average 96 / Average 97
TM-30	Rf: Average 94 / Rg: Average 102		Rf: Average 95 / Rg: Average 102	Rf: Average 94 / Rg: Average 101
Dimming	0-100%		0-100%, by 0.1% increment	
Control	On-board, Remote Controller, NANLINK APP, DMX/RDM			
Product Size	330 × 228 × 123mm / 12.99 × 8.98 × 4.84"		352 × 230 × 142mm / 13.86 × 9.06 × 5.59"	400 × 230 × 142mm / 15.75 × 9.06 × 5.59"
Product Weight	2.88kg / 6.35lb	2.9kg / 6.39lb	3.88kg / 8.55lb	4.34kg / 9.57lb

## Illumination (lux / fc)

Model/CCT	Forza 300 II (5600K)			Forza 300B II (3200K)			Forza 300B II (5600K)		
Distance	1M	3M	5M	1M	3M	5M	1M	3M	5M
Light Only	14270 lux / 1326 fc	1713 lux / 159 fc	696 lux / 65 fc	10780 lux / 1001 fc	1336 lux / 124 fc	558 lux / 52 fc	13790 lux / 1281 fc	1682 lux / 156 fc	700 lux / 65 fc
With Reflector	69400 lux / 6447 fc	6321 lux / 587 fc	2340 lux / 217 fc	34260 lux / 3183 fc	3167 lux / 294 fc	1208 lux / 112 fc	43480 lux / 4039 fc	4016 lux / 373 fc	1535 lux / 143 fc
With FL-20G Spot	197000 lux / 18301 fc	17430 lux / 1619 fc	6038 lux / 561 fc	120000 lux / 11148 fc	10980 lux / 1020 fc	3801 lux / 353 fc	151000 lux / 14028 fc	13720 lux / 1275 fc	4767 lux / 443 fc
With FL-20G Flood	39160 lux / 3638 fc	4576 lux / 425 fc	1780 lux / 165 fc	32260 lux / 2997 fc	3963 lux / 368 fc	1531 lux / 142 fc	40420 lux / 3755 fc	4955 lux / 460 fc	1927 lux / 179 fc

Model/CCT	Forza 500 II (5600K)			Forza 500B II (3200K)			Forza 500B II (5600K)		
Distance	3M	5M	7M	3M	5M	7M	3M	5M	7M
Light Only	2715 lux / 252 fc	1120 lux / 104 fc	614 lux / 57 fc	2367 lux / 220 fc	987 lux / 92 fc	541 lux / 50 fc	2739 lux / 254 fc	1140 lux / 106 fc	623 lux / 58 fc
With Reflector	8376 lux / 778 fc	3030 lux / 281 fc	1633 lux / 152 fc	5312 lux / 493 fc	1992 lux / 185 fc	1103 lux / 102 fc	6108 lux / 567 fc	2302 lux / 214 fc	1276 lux / 119 fc
With FL-20G Spot	20860 lux / 1938 fc	7311 lux / 679 fc	3675 lux / 341 fc	14860 lux / 1380 fc	5149 lux / 478 fc	2618 lux / 243 fc	17400 lux / 1616 fc	5938 lux / 552 fc	2995 lux / 278 fc
With FL-20G Flood	6744 lux / 627 fc	2576 lux / 239 fc	1410 lux / 131 fc	6242 lux / 580 fc	2341 lux / 217 fc	1273 lux / 118 fc	7098 lux / 659 fc	2673 lux / 248 fc	1455 lux / 135 fc

# Forza 720/720B *Technical Data*

Model	<i>Forza 720</i>	<i>Forza 720B</i>
Rated Power	800W	
Input Voltage/Current	DC 48V/16.67A Max, AC 100-240V 50/60Hz	
CCT	5600K	2700K-6500K
CRI / TLCI	95 / 96	Average 96 / Average 97
TM-30	Rf: Average 93 / Rg: Average 102	Rf: Average 95 / Rg: Average 102
Dimming	0-100%, by 0.1% increment	
Control	On-board, Remote Controller, NANLINK APP, DMX/RDM	
Product Size	475 × 231 × 142mm / 18.70 × 9.09 × 5.59"	518 × 228 × 142mm / 20.39 × 8.98 × 5.59"
Product Weight	4.8kg / 10.58lb	5.3kg / 11.7lb

## Illumination (lux / fc)

Model/CCT	<i>Forza 720(5600K)</i>			<i>Forza 720B(3200K)</i>			<i>Forza 720B(5600K)</i>		
Distance	3M	5M	7M	3M	5M	7M	3M	5M	7M
Light Only	3777 lux 351 fc	1629 lux 151 fc	903 lux 84 fc	2644 lux 246 fc	1192 lux 111 fc	595 lux 55 fc	3116 lux 289 fc	1407 lux 131 fc	716 lux 67 fc
With Reflector	10200 lux 948 fc	3945 lux 366 fc	2211 lux 205 fc	6604 lux 614 fc	2618 lux 243 fc	1423 lux 132 fc	7919 lux 736 fc	3152 lux 293 fc	1714 lux 159 fc
With FL-20G Spot	24980 lux 2321 fc	8618 lux 801 fc	4340 lux 403 fc	15290 lux 1420 fc	5292 lux 492 fc	2711 lux 252 fc	17650 lux 1640 fc	6344 lux 589 fc	3234 lux 300 fc
With FL-20G Flood	7832 lux 728 fc	3128 lux 291 fc	1787 lux 166 fc	6173 lux 573 fc	2426 lux 225 fc	1340 lux 124 fc	7363 lux 684 fc	2884 lux 268 fc	1607 lux 149 fc



# Forza Kit



## Forza 60/60B II/60C 3KIT-PT

- Light × 3
- Power Adapter 15V/6A × 3
- Power Cable 3M × 3
- COB Protective Cap × 3
- RF-FMM-45-S Reflector × 3
- BT-BG-FZ60 Battery Grip × 3
- Bowens Mount Adapter × 1
- FL-11 × 1
- User Manual × 1
- WRT-26 Plastic Trolley Case × 1

(The light stands are not included)



## Forza 150 3KIT-PT

- Light × 3
- Power Adapter 24V/7.5A × 3
- Power Cable 4.5M × 3
- RF-FMM-45 Reflector × 3
- AS-BA-FMM Bowens Adapter × 3
- FL-11 Fresnel Lens × 1
- BT-BG-XLR4 Battery Grip × 3
- User Manual × 1
- DMX Reference Guide × 1
- LS-186-5/8 Light Stand × 3
- CC-PT-62 Trolley Case × 1



## Forza 300/300B/500/500B II 2KIT-ST

- Light × 2
- Control Unit × 2
- COB Protective Cap × 2
- Reflector × 2
- DC Connection Cable 3M × 2
- AC Power Cable 6M × 2
- Quick Release Clamp × 2
- DMX Reference Guide × 1
- User Manual × 1
- Trolley Case × 1

(The batteries and light stands are not included)



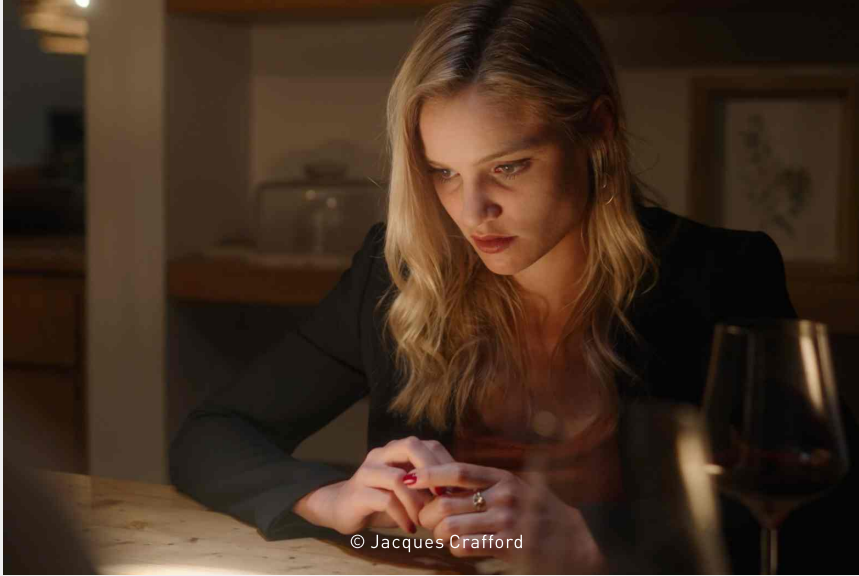
## Forza 720/720B KIT-ST

- Light × 1
- Control Unit × 1
- DC Connection Cable 5M × 1
- AC Power Cable 6M × 1
- Reflector × 1
- COB Protective Cap × 1
- Quick Release Clamp × 1
- User Manual × 1
- DMX Reference Guide × 1
- CC-ST-FZ720 Trolley Case × 1

(The light stand is not included)



© Martin Krolop



© Jacques Crafford

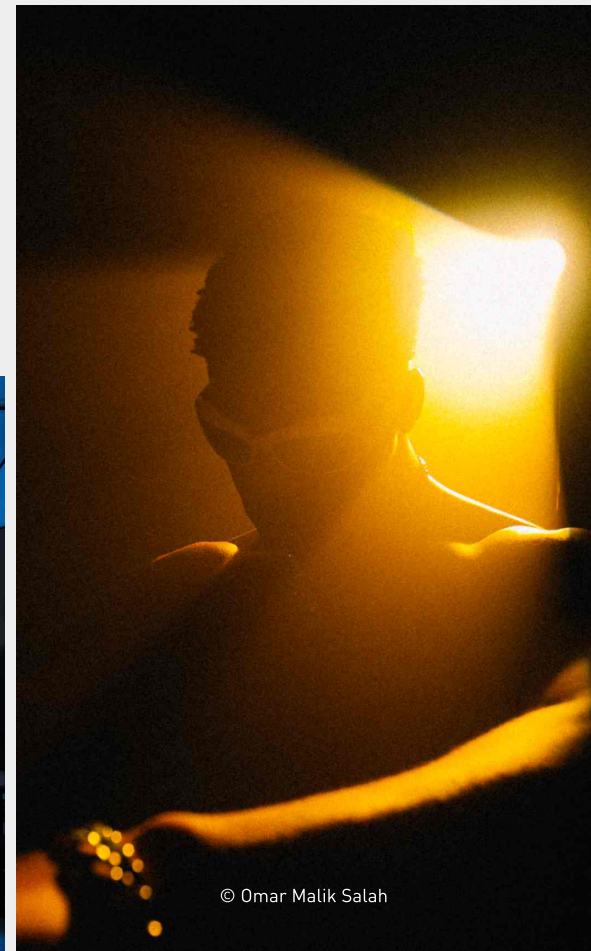


## *Forza Series*

Powerful illumination in a compact lightweight design, ranging from 72W to 800W, the Forza series is perfect for all different scale of production.



© Pooya Hoseinnezhad



© Omar Malik Salah

# PJ-FMM-19/36

Compatible fixtures: Forza 60 II/60B II/60C/150/150B, FS-60B

**Output Greatly Boosted:** permits precision light shaping capabilities while exponentially intensify the output of the fixture paired with it.

The illumination of Forza 60 II with PJ-FMM-19 @1m equals to

**17.5** times light only **3.4** times with reflector **1.4** times with FL-11 in spot 10°

- 1. New Optics Design:** Aspherical lens, optical anti-reflective coating and internal housing texture combined to offer a superior finish to the lighting effects.
- 2. Extra Durability Performance:** Made of lightweight Nylon with robust quality to provide good performance for durability.
- 3. Excellent Heat Dissipation:** Low heat absorption materials allow for good heat dissipation and easy handle for users.
- 4. Sturdy Protective Package:** Specially designed package to ensure the projection attachment is well-protected while in transit.

## Includes

PJ-FMM x 1, PJ-FMM-LENS-19 / 36 x 1, GOBO x 4 (each has a different pattern), GOBO Frame x 1, Gel Frame x 1, Carrying Bag x 1, User Manual x 1, M Size GOBO Holder x 1



# PJ-BM-19/36

Compatible with: Light fixtures with Bowens mount

The illumination of Forza 500 II with PJ-BM-19 @ 3M equals to

**7.7** times light only **2.5** times standard reflector **1** time with FL-20G in spot 10°

- 1. Meticulous Optics Design:** recurrent refinement over its optical system is made to minimize color fringing and accomplish pinpoint accuracy in image. The output can be raised to a whole new level and concentrate light even further to achieve more ideal results.
- 2. Standard Bowens Mount:** compatible with Forza series fixture and further broaden the application scenarios.
- 3. Premium Build Quality:** features an aluminum alloy die-cast metal body to give creators a peace of mind in content creation and film production.
- 4. Brand New Yoke:** meet the requirements for close range lighting setup at high angles and free to be mounted on any light stands with both 5/8" baby mount and 1-1/8" junior pin.
- 5. Consolidated Flight Case:** the projection attachment and all its accompanying accessories can be well packed and make transportation safety not a concern any longer.



## Includes

PJ-BM × 1, PJ-BM-LENS-19/36 × 1, Silicone Protective Cap × 1, Gobo in B Size × 4, Gobo Frame × 1, Gel Frame × 1, Flight Case × 1, User Manual × 1

# PJ-FMM/BM-19/36 Accessories (Optional)



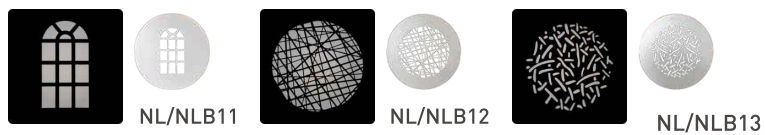
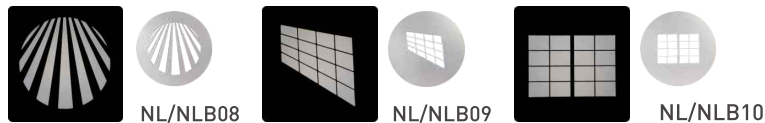
PJ-FMM/BM-AI  
Adjustable Iris Diaphragm for PJ-FMM/BM



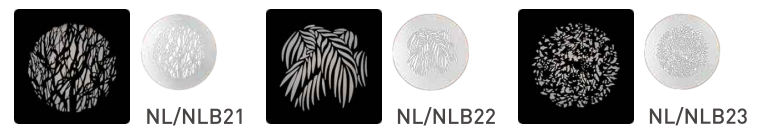
PJ-FMM/BM-LENS-19  
19° Lens for PJ-FMM/BM



PJ-FMM/BM-LENS-36  
36° Lens for PJ-FMM/BM



AS-GB-SET1  
AS-GB-B-SET1  
GOBO Set 1



AS-GB-SET2  
AS-GB-B-SET2  
GOBO Set 2

# PJ-FMM/BM-19/36 *Technical Data*

<b>Model</b>	<b>PJ-FMM-19 / 36</b>	<b>PJ-BM-19 / 36</b>
<b>Beam Angle</b>	19° / 36°	
<b>Compatible Product or Mount</b>	Forza 60 II/60B II/60C /150/150B, FS-60B	Light Fixtures with Bowens Mount
<b>Product Size</b>	Projection Attachment without Lens: 215 × 160 × 235mm / 8.46 × 6.30 × 9.25" 19° / 36° Lens: φ117 × 150mm / φ4.60 × 5.90"	Projection Attachment without Lens: 314 × 267 × 441mm / 12.36 × 10.51 × 17.36" 19° / 36° Lens: φ205 × 243mm / φ8.07 × 9.57"
<b>Product Weight</b>	Projection Attachment without Lens: 0.89kg / 1.96lb 19° Lens: 0.64kg / 1.41lb 36° Lens: 0.69kg / 1.52lb	Projection Attachment without Lens: 4.2kg / 9.26lb 19° Lens: 3.8kg / 8.38lb 36° Lens: 3.1kg / 6.83lb

## Illumination (lux / fc)

Model		PJ-FMM-19			PJ-FMM-36			Model		PJ-BM-19			PJ-BM-36		
Distance		1M	3M	5M	1M	3M	5M	Distance		3M	5M	7M	3M	5M	7M
<b>Forza 60 II</b>	5600K	60000 lux 5574 fc	4469 lux 415 fc	1543 lux 143 fc	23790 lux 2210 fc	1850 lux 172 fc	639 lux 59 fc	<b>Forza 300 II</b>	5600K	17460 lux 1622 fc	5532 lux 514 fc	2819 lux 262 fc	6063 lux 563 fc	2055 lux 191 fc	1024 lux 95 fc
	3200K	45560 lux 4233 fc	3305 lux 307 fc	1099 lux 102 fc	19210 lux 1785 fc	1475 lux 137 fc	501 lux 47 fc		<b>Forza 300B II</b>	3200K	10580 lux 983 fc	3434 lux 319 fc	1663 lux 154 fc	3694 lux 343 fc	1234 lux 115 fc
<b>Forza 60B II</b>	5600K	53070 lux 4930 fc	3826 lux 355 fc	1285 lux 119 fc	21980 lux 2042 fc	1714 lux 159 fc	577 lux 54 fc	<b>Forza 500 II</b>		5600K	13390 lux 1244 fc	4296 lux 399 fc	2072 lux 192 fc	4576 lux 425 fc	1527 lux 142 fc
	3200K	41920 lux 3894 fc	3259 lux 303 fc	1104 lux 103 fc	16610 lux 1543 fc	1358 lux 126 fc	466 lux 43 fc		<b>Forza 500B II</b>	3200K	21010 lux 1952 fc	6818 lux 633 fc	3260 lux 303 fc	7463 lux 693 fc	2526 lux 235 fc
<b>Forza 60C</b>	5600K	42700 lux 3967 fc	3313 lux 308 fc	1122 lux 104 fc	17500 lux 1626 fc	1440 lux 134 fc	494 lux 46 fc	<b>Forza 500B II</b>		5600K	13920 lux 1293 fc	4450 lux 413 fc	2200 lux 204 fc	16010 lux 1487 fc	5057 lux 470 fc
	3200K	95750 lux 8895 fc	7465 lux 693 fc	2560 lux 238 fc	33060 lux 3071 fc	2816 lux 262 fc	983 lux 91 fc		<b>Forza 720</b>	3200K	4915 lux 457 fc	1670 lux 155 fc	868 lux 81 fc	5686 lux 528 fc	1950 lux 181 fc
<b>Forza 150</b>	5600K	95750 lux 8895 fc	7465 lux 693 fc	2560 lux 238 fc	33060 lux 3071 fc	2816 lux 262 fc	983 lux 91 fc	<b>Forza 720</b>		5600K	22930 lux 2130 fc	7970 lux 740 fc	3464 lux 322 fc	8322 lux 773 fc	2773 lux 258 fc
<b>Forza 150B</b>	3200K	64480 lux 5990 fc	4605 lux 428 fc	1632 lux 152 fc	25600 lux 2378 fc	1972 lux 183 fc	707 lux 66 fc		<b>Forza 720B</b>	3200K	14590 lux 1355 fc	4713 lux 438 fc	2321 lux 216 fc	5101 lux 474 fc	1788 lux 166 fc
	5600K	76560 lux 7112 fc	5594 lux 520 fc	1912 lux 178 fc	30700 lux 2852 fc	2467 lux 229 fc	848 lux 79 fc	<b>Forza 720B</b>		5600K	17440 lux 1620 fc	5631 lux 523 fc	2761 lux 256 fc	6098 lux 567 fc	2123 lux 197 fc



© Jacques Crafford



© Alexandru Don



© Pooya

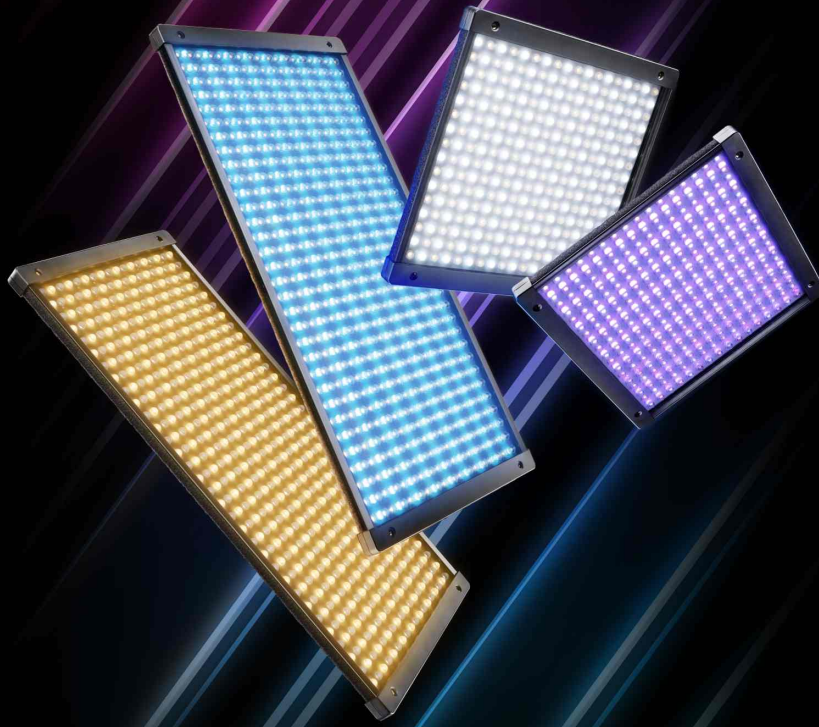
## *Projection Attachment Series*

Significant improvement for output, minimize color aberration, compatible with diversified GOBO projection to provide possibility for users' creativity.



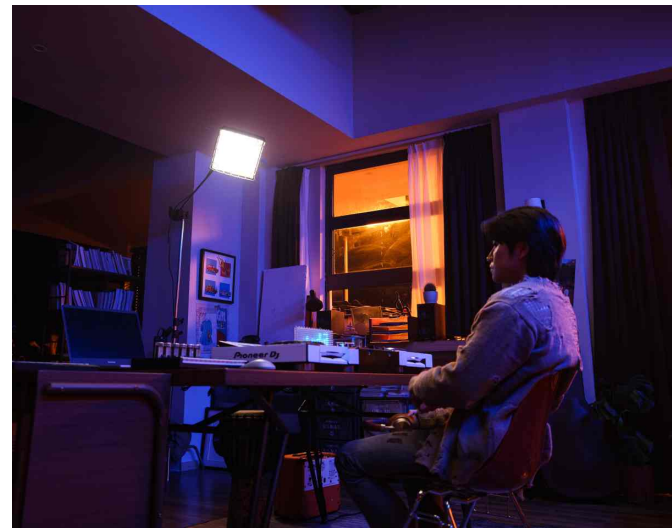
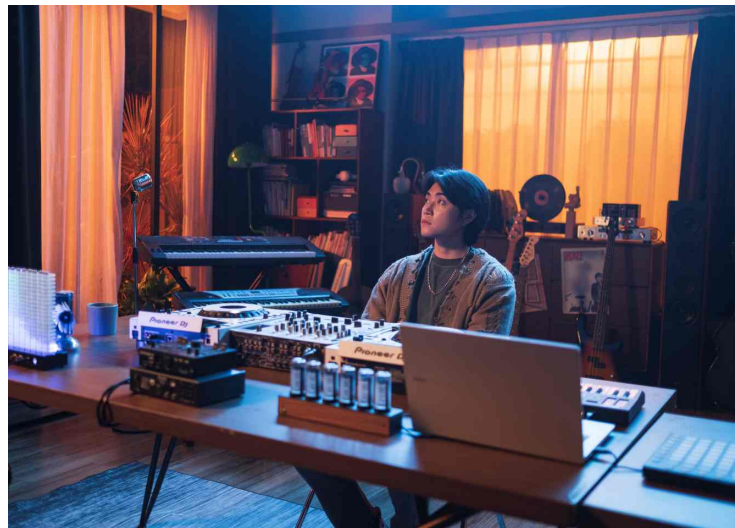
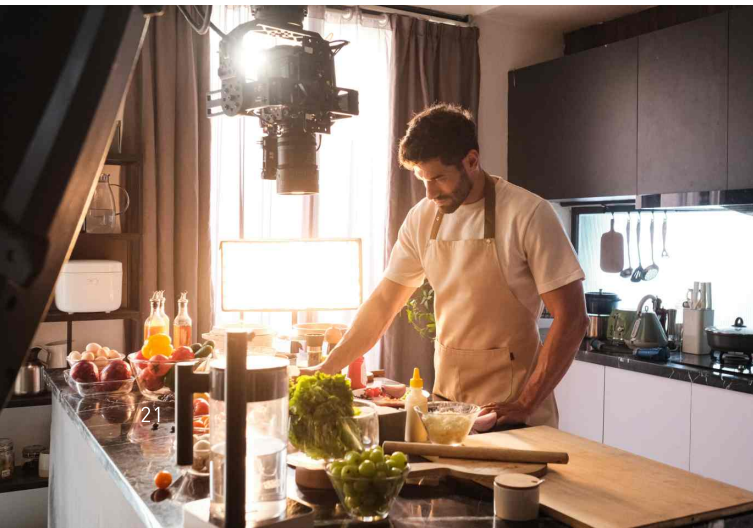
© Alexandru Don





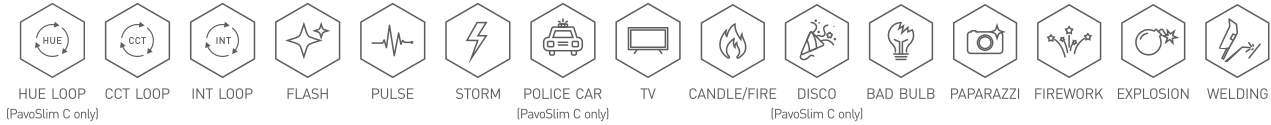
# PavoSlim Series

LED Panel Light





# PavoSlim 60B/60C/120B/120C LED Panel Light



1. Slim and Lightweight: Only 1.86cm thick, PavoSlim 60B/60C (1x1')<1kg, PavoSlim 120B/120C (2x1')<2kg
2. Bi-color (60B/120B) and RGBWW (60C/120C) with metal housing
3. Efficient heat dissipation with excellent output, PavoSlim 60B/60C/120B/120C: 8,156lux/7,074lux/17,620lux/12,830lux @1m (light only, 5600K)
4. PavoSlim 60B/120B: CRI/TLCI Avg 95/97, TM-30 Rf/Rg Avg 95/102. PavoSlim 60C/120C: CRI/TLCI Avg 96/97, TM-30 Rf/Rg Avg 94/100
5. PavoSlim 60C/120C provide various lighting choices: CCT, HSI, RGBW, Gel and Effect modes
6. Softboxes with innovative compression design for rapid setup



## Power Supply Options (support full power output)

PavoSlim 60B/60C: AC power, V-mount batteries, NP-F batteries  
 PavoSlim 120B/120C: AC power, DC power, V-mount batteries

## Includes

Light x 1, Control Unit x 1, Universal Holder x 1, DC Connection Cable 2.6M x 1, AC Power Cable 4.5M x 1, Softbox x 1, Diffuser x 2 (Lite Diffuser x 1+Standard Diffuser x 1), Eggcrate x 1, \*Quick Release Clamp x 1, \*Baby Pin Holder x 1, User Manual x 1, Carrying Bag x 1 (\*PavoSlim 60C/120C only)



## Accessories (Optional)



AS-MBA-1/4-SET  
Magnetic Base Adapter  
with 1/4"-20 Thread Set



SB-PS60-F  
Foldable Softbox with Eggcrate  
for PavoSlim 60B/60C



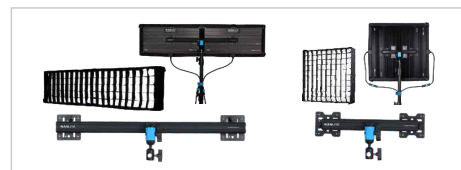
SB-PS120-F  
Foldable Softbox with Eggcrate  
for PavoSlim 120B/120C



SB-PS60-Q  
Quick-release Softbox with  
Eggcrate for PavoSlim 60B/60C



SB-PS120-Q  
Quick-release Softbox with  
Eggcrate for PavoSlim 120B/120C



AS-DPC-PS120-KIT  
PavoSlim 120B/C Dual-Panel Coupler Kit

## PavoSlim 60B/120B Technical Data

Model	PavoSlim 60B	PavoSlim 120B
Rated Power	72W	150W
Input Voltage/Current	DC (Battery) 14.4-26V DC (Battery) 7.4V×2 AC 100-240V 50/60Hz	DC 24V DC (Battery) 14.4-26V AC 100-240V 50/60Hz
CCT	2700K-6500K	
CRI / TLCI	Average 95 / Average 97	
Dimming	0-100%	
Control	On-board, Remote Controller, NANLINK APP, DMX/RDM	
Product Size	306.3 × 300.65 × 18.6mm / 12.06 × 11.84 × 0.73"	602 × 306.3 × 18.6mm / 23.7 × 12.06 × 0.73"
Product Weight	0.91kg / 2.01lb	1.65kg / 3.64lb

### Illumination (lux / fc)

Model	PavoSlim 60B			PavoSlim 120B		
	1M	2M	3M	1M	2M	3M
2700K	7063 lux / 656 fc	1872 lux / 174 fc	840 lux / 78 fc	15480 lux / 1438 fc	4212 lux / 391 fc	1945 lux / 181 fc
3200K	7433 lux / 691 fc	1912 lux / 178 fc	871 lux / 81 fc	16210 lux / 1506 fc	4422 lux / 411 fc	2035 lux / 189 fc
5600K	8156 lux / 758 fc	2097 lux / 195 fc	955 lux / 89 fc	17620 lux / 1637 fc	4815 lux / 447 fc	2210 lux / 205 fc
6500K	7893 lux / 733 fc	2022 lux / 188 fc	918 lux / 85 fc	18010 lux / 1673 fc	4933 lux / 458 fc	2253 lux / 209 fc

# PavoSlim 60C/120C *Technical Data*

Model	<i>PavoSlim 60C</i>	<i>PavoSlim 120C</i>
Rated Power	72W	150W
Input Voltage/Current	DC (Battery) 14.4-26V DC (Battery) 7.4V×2 AC 100-240V 50/60Hz	DC 24V DC (Battery)14.4-26V AC100-240V 50/60Hz
CCT	2700K-7500K (G/M±150)	
CRI / TLCI	Average 96 / Average 97	
Dimming	0-100%	
Control	On-board, Remote Controller, NANLINK APP, DMX/RDM, LumenRadio CRMX	
Product Size	306.3 × 300.65 × 18.6mm / 12.06 × 11.84 × 0.73"	602 × 306.3 × 18.6mm / 23.7 × 12.06 × 0.73"
Product Weight	0.94kg / 2.07lb	1.76kg / 3.88lb

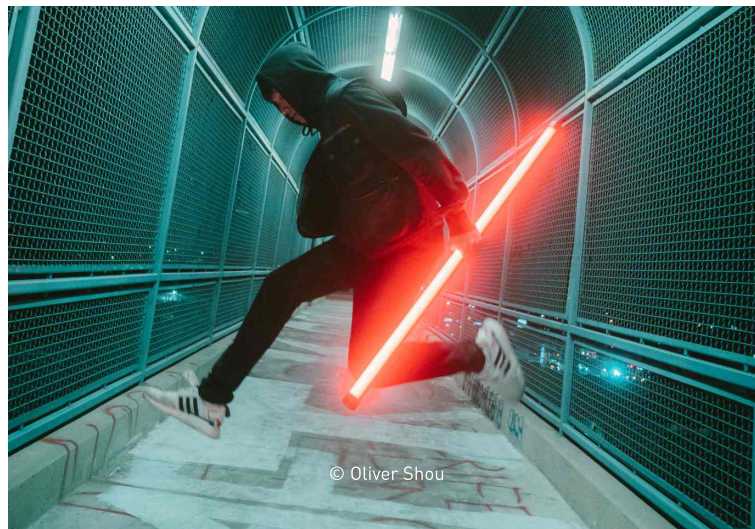
## Illumination (lux / fc)

Model	<i>PavoSlim 60C</i>			<i>PavoSlim 120C</i>		
Distance	1M	2M	3M	1M	2M	3M
2700K	5912 lux / 549 fc	1558 lux / 145 fc	717 lux / 67 fc	10500 lux / 975 fc	2960 lux / 275 fc	1388 lux / 129 fc
3200K	6362 lux / 591 fc	1674 lux / 156 fc	769 lux / 71 fc	11200 lux / 1040 fc	3146 lux / 292 fc	1475 lux / 137 fc
5600K	7074 lux / 657 fc	1851 lux / 172 fc	849 lux / 79 fc	12830 lux / 1192 fc	3588 lux / 333 fc	1675 lux / 156 fc
6500K	6977 lux / 648 fc	1827 lux / 170 fc	837 lux / 78 fc	12420 lux / 1154 fc	3463 lux / 322 fc	1613 lux / 150 fc
R	2580 lux / 240 fc	675 lux / 63 fc	305 lux / 28 fc	5100 lux / 474 fc	1340 lux / 124 fc	641 lux / 60 fc
G	4595 lux / 427 fc	1182 lux / 110 fc	544 lux / 51 fc	8655 lux / 804 fc	2283 lux / 212 fc	1063 lux / 99 fc
B	660 lux / 61 fc	169 lux / 16 fc	78 lux / 7 fc	1290 lux / 120 fc	337 lux / 31 fc	156 lux / 14 fc



# PavoTube Series

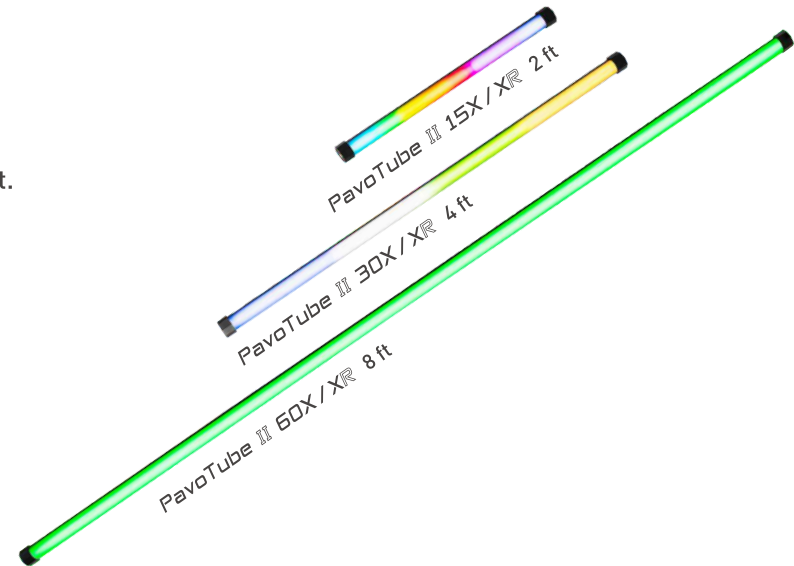
LED RGBWW Tube Light



# PavoTube II X/XR LED RGBWW Pixel Tube Light



1. Color temperature range from 2700K-12000K with G/M adjustment.
2. Octagonal design allows placement from multiple angles.  
Three 1/4-20 mount receivers for mounting convenience.
3. Robust Metal Housing minimize worries about accidental drop or risky placement.
4. Built-in battery make cable-free possible for anywhere.
5. Besides 15 special effects, 10 additional pixel effects including HUE Loop, CCT Loop, INT Loop, Multi-color, Fade, Scroll, Rainbow, Process, Fire, Driving  
[\*Process, \*Fire, \*Driving only APP Control] enable more creativity.



## Charge Time:

15X/XR: about 3 hours  
30X/XR: about 3.5 hours  
60X/XR: about 5.5 hours

## Battery Run Time:

15X/XR: about 1.5 hours at 100% intensity, up to 23 hours  
30X/XR: about 2.2 hours at 100% intensity, up to 29 hours  
60X/XR: about 2 hours at 100% intensity, up to 36 hours

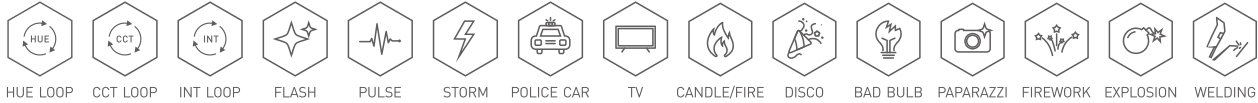
## Accessories (Optional)



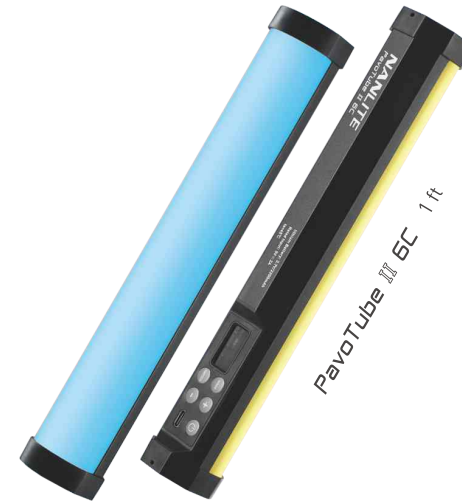
# PavoTube II X/XR Includes

Items	PavoTube II 15X/XR				PavoTube II 30X/XR				PavoTube II 60X/XR		
	1 KIT	2 KIT	4 KIT	8 KIT	1 KIT	2 KIT	4 KIT	8 KIT	2 KIT	4 KIT	8 KIT
Light	× 1	× 2	× 4	× 8	× 1	× 2	× 4	× 8	× 2	× 4	× 8
Power Adapter	× 1	× 2	× 4	× 8	× 1	× 2	× 4	× 8	× 2	× 4	× 8
Power Adapter Rubber Strap	× 1	× 2	× 4	× 8	× 1	× 2	× 4	× 8	× 2	× 4	× 8
Power Cable 3M	× 1	× 2	× 4	× 8	× 1	× 2	× 4	× 8	× 2	× 4	× 8
HD-T12-1-C Clip	× 1	× 2	× 4	× 16	× 1	× 2	× 4	× 16	× 2	× 8	× 16
Eyebolt	× 2	× 4	× 8	× 16	× 2	× 4	× 8	× 16	× 4	× 8	× 16
User Manual	× 1	× 1	× 1	× 1	× 1	× 1	× 1	× 1	× 1	× 1	× 1
USB Drive	× 1	× 1	× 1	× 1	× 1	× 1	× 1	× 1	× 1	× 1	× 1
1/8 DC Power Cable	/	/	/	× 1	/	/	/	× 1	/	/	× 1
DMX Adapter Cable	/	/	/	/	/	/	/	/	/	/	× 8
Magnet Tube Clip	/	/	/	/	/	/	/	/	/	/	× 16
8-in-1 Power Adapter Holder	/	/	/	× 1	/	/	/	× 1	/	/	/
Multi-angle Mount	/	/	/	/	/	/	/	/	/	/	× 16
Floor Stand	/	/	/	× 8	/	/	/	× 8	/	/	/
Carrying Bag	× 1	× 1	× 1	/	× 1	× 1	× 1	/	× 1	× 1	/
Hard Case	/	/	/	× 1	/	/	/	× 1	/	/	/
Flight Case	/	/	/	/	/	/	/	/	/	/	× 1

# PavoTube II 6C *Limitless Colors-Effortless Load*



1. 11W RGBWW LED tube with internal battery, perfect for creating linear lighting sources.
2. Wide CCT from 2700K-7500K with advanced G/M adjustment.
3. HSI mode with 36000 colors options and 15 practical effects.
4. Built-in magnets and 1/4"-20 mounts at both ends.
5. A USB Type-C port for charging and future firmware updates.



## Battery Run Time

Charge Time: 2.5 hours

Battery Run Time: about 1 hour at 100% intensity, up to 6 hours

## Includes

Light x 1, Iron Plate x 3, USB Type-C Cable x 1, Safety Strap x 1, Carrying Bag x 1

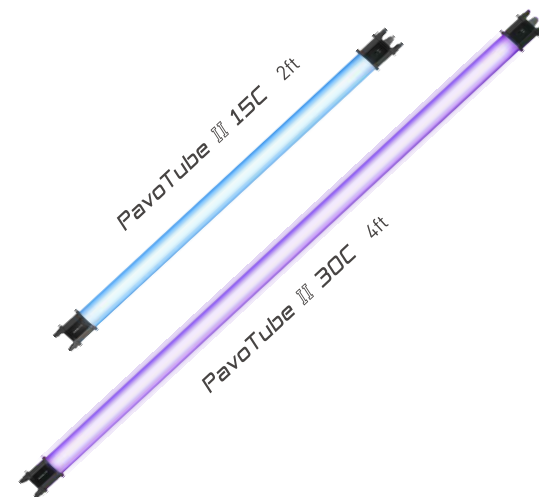
## Accessories (Optional)



# PavoTube II 15C/30C Revolving Color



1. Wider CCT range of 2700-7500K with G/M±150 adjustment.
2. 15 built-in practical effects, HSI mode with 36000 colors options.
3. Powered by built-in battery and included adapter, as well as PD3.0 power supply via the type-c port.
4. Two knobs, two buttons and one switch, provide quick and convenient operation.
5. Available for control by Nanlink App directly, also by wired DMX/RDM.



## Charge Time:

II 15C: about 2.2 hours (by 15V2A power adapter)  
 II 30C: about 2.2 hours (by 15V4A power adapter)

## Battery Run Time:

II 15C: about 2 hours at 100% intensity, up to 14 hours  
 II 30C: about 2.5 hours at 100% intensity, up to 29 hours

## Includes

PavoTube II 15C KIT			PavoTube II 30C KIT		
1 KIT	2 KIT	4 KIT	1 KIT	2 KIT	4 KIT
Light × 1	Light × 2	Light × 4	Light × 1	Light × 2	Light × 4
Power Adapter × 1	Power Adapter × 2	Power Adapter × 4	Power Adapter × 1	Power Adapter × 2	Power Adapter × 4
Power Cable 3M × 1	Power Cable 3M × 2	Power Cable 3M × 4	Power Cable 3M × 1	Power Cable 3M × 2	Power Cable 3M × 4
HD-T12-1-C Clip × 1	HD-T12-1-C Clip × 2	HD-T12-1-C Clip × 4	HD-T12-1-C Clip × 1	HD-T12-1-C Clip × 2	HD-T12-1-C Clip × 4
Steel Wire Rope × 2	Steel Wire Rope × 4	Steel Wire Rope × 8	Steel Wire Rope × 2	Steel Wire Rope × 4	Steel Wire Rope × 8
User Manual × 1	User Manual × 1	User Manual × 1	User Manual × 1	User Manual × 1	User Manual × 1
Carrying Bag × 1	Carrying Bag × 1	Carrying Bag × 1	Carrying Bag × 1	Carrying Bag × 1	Carrying Bag × 1



### Accessories for T12 Tube Holder (Optional)



HD-T12-1-CP



HD-T12-1-BHP



HD-T12-1-LA



HD-T12-1-C  
(Included)



HD-T12-4-BHG



HD-T12-2-BHG



HD-T12-4-P



HD-T12-2-P

### Other Accessories (Optional)



HD-T12-1-MC  
Magnet Tube Clip



BD-PTII15C/30C+EC  
Barndoor & Eggcrate



LS-FL-T12  
T12 Floor Stand  
for II 15X/30X/15C/30C



FR-T12-8+SB  
8 Lights Frame with Softbox  
& Eggcrate for II 30X/30C



© Simone Ferretti



© Crew Ten



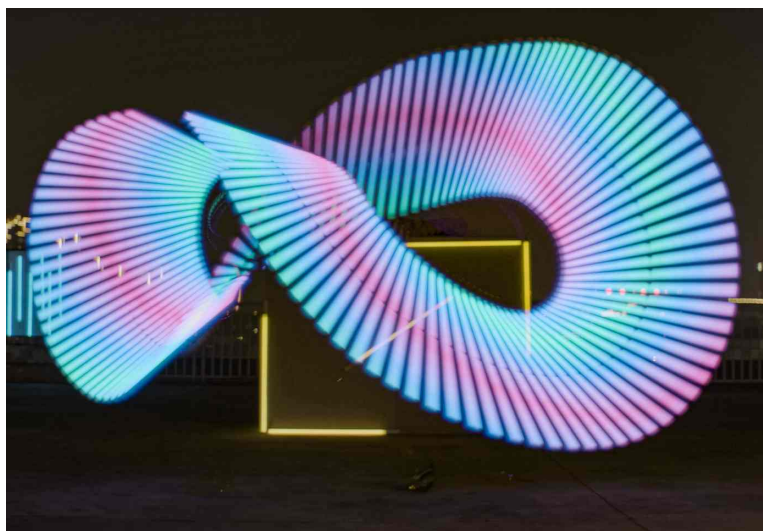
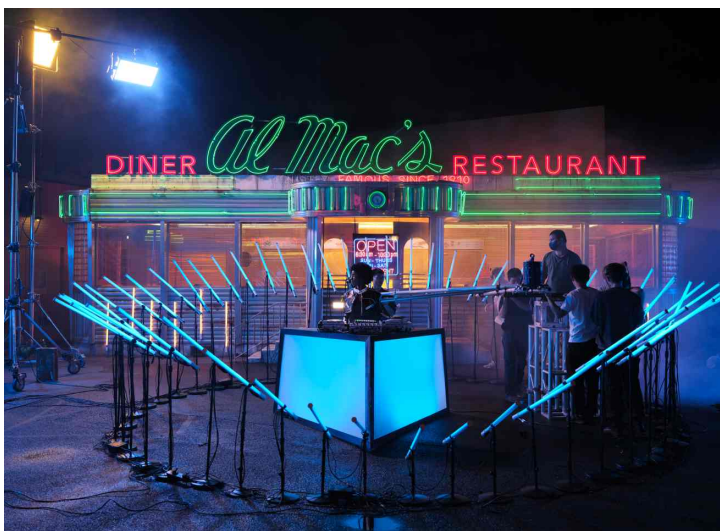
© Oliver Takáč



© Sebastian Jern

# PavoTube T8-7X

LED RGBWW Pixel Tube Light



# PavoTube T8-7X *Make Wonders in Your Hands*

1. Wide CCT range from 2700K to 7500K with G/M adjustment
2. Three-buttons design allows toggling between 5-steps DIM / 6-steps CCT / 12-steps HUE adjustment.
3. Built-in battery enable power supply for on-location shooting without the hassle of cables.
4. 280g weight & 3ft length create portability to everywhere and possibility as a critical prop in different scenes.
5. Besides 15 special effects, 10 additional pixel effects including HUE Loop, CCT Loop, INT Loop, Multi-color, Fade, Scroll, Rainbow, Process, Fire, Driving (\*Process, \*Fire, \*Driving only APP Control) enable more creativity.



On-board



NANLINK APP



DMX/RDM



Wire Controller

**Charge Time:** about 2.5 hours

**Battery Run Time:** about 1 hour at 100% intensity

## Includes

PavoTube T8-7X 1KIT: Light × 1, USB Type-C Cable × 1, User Manual × 1

PavoTube T8-7X 2KIT: Light × 2, USB Type-C Cable × 2, USB Drive × 1, User Manual × 1, Carrying Bag × 1

PavoTube T8-7X 4KIT: Light × 4, USB Type-C Cable × 4, USB Drive × 1, User Manual × 1, Carrying Bag × 1

## Accessories (Optional)



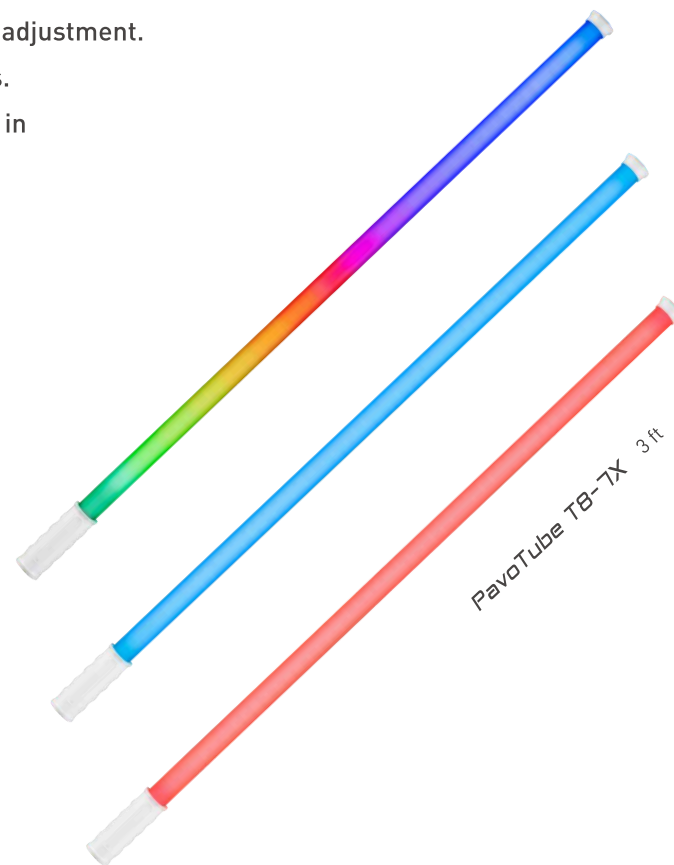
WC-USBC-C1  
Wire Controller  
for PavoTube T8-7X/PavoBulb 10C



LS-FL-T8  
T8 Floor Stand



CB-DMX-USBC-1/3  
Type-C 1/3 DMX Adapter Cable  
for PavoTube T8-7X/PavoBulb 10C



# PavoTube II X/XR *Technical Data*

Model	<i>PavoTube II 15X/XR</i>	<i>PavoTube II 30X/XR</i>	<i>PavoTube II 60X/XR</i>
Rated Power	35W	70W	106W
Input Voltage/Current	DC 15V/2A Max, AC 100-240V 50/60Hz	DC 15V/4A Max, AC 100-240V 50/60Hz	DC 15V/6.5A Max, AC 100-240V 50/60Hz
CRI	Average 97		
TLCI	Average 98		
CCT	2700K-12000K (G/M ±100)		
Dimming	0-100%		
Control	On-board, Remote Controller, NANLINK APP, DMX/RDM, *LumenRadio CRMX [*PavoTube II XR only]		
Special Effect	HUE Loop, CCT Loop, INT Loop, Flash, Pulse, Storm, Police Car, TV, Paparazzi, Candle/Fire, Disco, Bad Bulb, Firework, Explosion and Welding		
Pixel Effect	HUE Loop, CCT Loop, INT Loop, Multi-color, Fade, Scroll, Rainbow, *Process, *Fire, *Driving [*Only APP Control]		
Product Size	φ43 × 600mm / φ1.69 × 23.6"	φ43 × 1145mm / φ1.69 × 45.07"	φ43 × 2220mm / φ1.69 × 87.4"
Product Weight	0.82kg / 1.81lb	1.58kg / 3.48lb	2.9kg / 6.39lb

## Illumination (lux / fc)

Model	<i>PavoTube II 15X/XR</i>			<i>PavoTube II 30X/XR</i>			<i>PavoTube II 60X/XR</i>		
Distance	1M	2M	3M	1M	2M	3M	1M	2M	3M
2700K	343 lux / 32 fc	86 lux / 8 fc	38 lux / 4 fc	686 lux / 64 fc	174 lux / 16 fc	78 lux / 7 fc	900 lux / 84 fc	336 lux / 31 fc	180 lux / 17 fc
3200K	350 lux / 33 fc	87 lux / 8 fc	39 lux / 4 fc	688 lux / 64 fc	175 lux / 16 fc	78 lux / 7 fc	928 lux / 86 fc	345 lux / 32 fc	184 lux / 17 fc
5600K	377 lux / 35 fc	94 lux / 9 fc	42 lux / 4 fc	746 lux / 69 fc	189 lux / 18 fc	84 lux / 8 fc	991 lux / 92 fc	369 lux / 34 fc	194 lux / 18 fc
6500K	386 lux / 36 fc	97 lux / 9 fc	43 lux / 4 fc	770 lux / 72 fc	194 lux / 18 fc	87 lux / 8 fc	1024 lux / 95 fc	380 lux / 35 fc	201 lux / 19 fc
R	150 lux / 14 fc	39 lux / 4 fc	17 lux / 2 fc	272 lux / 25 fc	69 lux / 6 fc	30 lux / 3 fc	332 lux / 31 fc	131 lux / 12 fc	68 lux / 6 fc
G	308 lux / 29 fc	77 lux / 7 fc	34 lux / 3 fc	586 lux / 54 fc	144 lux / 13 fc	64 lux / 6 fc	783 lux / 73 fc	295 lux / 27 fc	153 lux / 14 fc
B	63 lux / 6 fc	15 lux / 1 fc	7 lux / 1 fc	123 lux / 11 fc	31 lux / 3 fc	14 lux / 1 fc	143 lux / 13 fc	55 lux / 5 fc	28 lux / 3 fc

# PavoTube II C/PavoTube T8-7X Technical Data

Model	PavoTube II 15C		PavoTube II 30C			PavoTube II 6C			PavoTube T8-7X		
Rated Power	30W		60W			11W			8W		
Input Voltage/Current	DC 15V/2A Max AC 100-240V 50/60Hz PD3.0 (9-20V) 20W Min		DC 15V/4A Max AC 100-240V 50/60Hz PD3.0 (12-20V) 30W Min			DC 5V/2A					
CCT	2700K-7500K (G/M ±150)					2700K-7500K (G/M ±100)					
CRI / TLCI	Average 97 / Average 98					Average 95 / Average 97			Average 96 / Average 97		
TM-30	Rf: Average 94 / Rg: Average 101					Rf: 91 / Rg: 102			/		
Dimming	0-100%					On-board Control: 0, 20, 40, 60, 80, 100 Other Control Methods:0-100%					
Control	On-board, Remote Controller, NANLINK APP, DMX/RDM					On-board, Remote Controller, NANLINK APP			On-board, NANLINK APP, DMX/RDM, Wire Controller		
Product Size	φ48 × 770mm / φ1.89 × 30.31"		φ48 × 1170mm / φ1.89 × 46.06"			φ39 × 250mm / φ1.54 × 9.84"			φ39 × 1002mm / φ1.53 × 39.44" (tube: φ28.5mm)		
Product Weight	0.85kg / 1.87lb		1.4kg / 3.09lb			0.26kg / 0.57lb			0.28kg / 0.61lb		

## Illumination (lux / fc)

Model	PavoTube II 15C			PavoTube II 30C			PavoTube II 6C			PavoTube T8-7X		
Distance	0.5M	1M	2M	0.5M	1M	2M	0.3 M	0.5 M	1 M	0.3 M	0.5 M	1 M
2700K	1231 lux 114 fc	374 lux 35 fc	103 lux 10 fc	1720 lux 160 fc	581 lux 54 fc	174 lux 16 fc	1361 lux 126 fc	599 lux 56 fc	148 lux 14fc	700 lux 65 fc	328 lux 30 fc	106 lux 10 fc
3200K	1335 lux 124 fc	391 lux 36 fc	107 lux 10 fc	1767 lux 164 fc	599 lux 56 fc	179 lux 17 fc	1416 lux 132 fc	639 lux 59 fc	155 lux 14 fc	711 lux 66 fc	334 lux 31 fc	107 lux 10 fc
5600K	1428 lux 133 fc	423 lux 39 fc	113 lux 10 fc	1910 lux 177 fc	647 lux 60 fc	193 lux 18 fc	1533 lux 142 fc	670 lux 62 fc	169 lux 16 fc	757 lux 70 fc	362 lux 34 fc	117 lux 11 fc
6500K	1460 lux 136 fc	428 lux 40 fc	117 lux 11 fc	1944 lux 181 fc	660 lux 61 fc	196 lux 18 fc	1540 lux 143 fc	694 lux 64 fc	170 lux 16 fc	783 lux 73 fc	371 lux 34 fc	121 lux 11 fc
R	601 lux 56 fc	181 lux 17 fc	50 lux 5 fc	870 lux 81 fc	303 lux 28 fc	88 lux 8 fc	654 lux 61 fc	284 lux 26 fc	70 lux 7 fc	256 lux 24 fc	121 lux 11 fc	40 lux 4 fc
G	1338 lux 124 fc	395 lux 37 fc	108 lux 10 fc	1819 lux 169 fc	642 lux 60 fc	181 lux 17 fc	1462 lux 136 fc	632 lux 59 fc	159 lux 15 fc	619 lux 58 fc	297 lux 28 fc	94 lux 9 fc
B	219 lux 20 fc	69 lux 6 fc	19 lux 2 fc	300 lux 28 fc	106 lux 10 fc	30 lux 3 fc	286 lux 27 fc	122 lux 11 fc	30 lux 3 fc	116 lux 11 fc	55 lux 5 fc	18 lux 2 fc



# PavoBulb LED RGBWW Bulb



HUE LOOP



CCT LOOP



INT LOOP



FLASH



PULSE



STORM



POLICE CAR



TV



CANDLE/FIRE



DISCO



BAD BULB



PAPARAZZI



FIREWORK



EXPLOSION



WELDING



# PavoBulb 10C *Practical Ideas, Scene Builder*

1. Accurate color rendition and wide CCT range of 2700-7500K with G/M adjustment
2. Full choices of 36000 colors and 15 customizable special effects in a tiny bulb weights 170g
3. Wide angle diffuser that can be altered by an extra bouncer with suction cup
4. Three buttons design, shortcuts for 5-steps dimming / 6-steps CCT / 12-steps HUE adjustments
5. Multiple control methods, including wire control, remote control, and DMX control
6. Many power supply options, E27 socket AC, USB Type-C DC and magnetic mount / E27-B22 adapter



## Battery Run Time

With NPF 970 battery: about 5.5 hours at 100% intensity  
 With NPF 750 battery: about 3 hours at 100% intensity  
 With NPF 550 battery: about 1.7 hours at 100% intensity

PavoBulb		Technical Data			
Model	PavoBulb 10C	Illumination (lux / fc)			
Rated Power	10W	Distance	0.3M	0.5M	1M
Input Voltage/Current	DC 5V/2.4A, AC 100-240V 50Hz/60Hz	2700K	885 lux / 82 fc	319 lux / 30 fc	80 lux / 7 fc
CCT	2700K-7500K (G/M ±100)	3200K	923 lux / 86 fc	332 lux / 31 fc	83 lux / 8 fc
CRI / TLCI	Average 95 / Average 97	4300K	955 lux / 89 fc	344 lux / 32 fc	86 lux / 8 fc
Dimming	On-board Control: 0, 20, 40, 60, 80, 100 Other Control Methods:0-100%	5600K	975 lux / 91 fc	351 lux / 33 fc	87 lux / 8 fc
Control	On-board, Remote Controller, NANLINK APP, DMX/RDM, Wire Controller	6500K	1018 lux / 95 fc	366 lux / 34 fc	91 lux / 8 fc
Product Size	φ73 × 121mm / φ2.87 × 4.76"	7500K	951 lux / 88 fc	342 lux / 32 fc	86 lux / 8 fc
Product Weight	0.17kg / 0.37lb	R	219 lux / 20 fc	77 lux / 7 fc	22 lux / 2 fc
		G	606 lux / 56 fc	223 lux / 21 fc	58 lux / 5 fc
		B	105 lux / 10 fc	40 lux / 4 fc	10 lux / 1 fc

## Accessories (Optional)



AS-MBA-E27  
E27 Magnetic Base Adapter  
with Power Cable



AS-BSC  
Bouncer with Suction Cup  
for Light Bulb



WC-USBC-C1  
Wire Controller  
for PavoTube T8-7X/PavoBulb 10C



BT-BA-SNP-E27  
Battery Adapter with E27 Head



CB-DMX-USBC-1/3  
USB Type-C 1/3 DMX Adapter Cable  
for PavoTube T8-7X/PavoBulb 10C

## Includes

### PavoBulb 10C



1 KIT



4 KIT



12 KIT

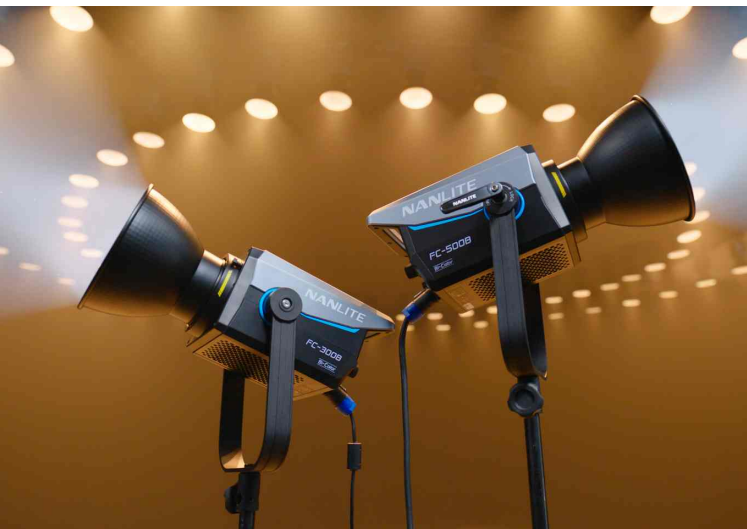
Light × 1	Light × 4	Light × 12
User Manual × 1	AS-MBA-E27 Magnetic Mount × 2	AS-MBA-E27 Magnetic Mount × 6
USB Type-C Cable × 1	WC-USBC-C1 Wired Controller × 2	WC-USBC-C1 Wired Controller × 6
/	USB Type-C Cable × 2	USB Type-C Cable × 3
/	AC Cable × 1	AC Cable × 3
/	BT-BA-SNP-E27 Battery Adapter with E27 Head × 2	BT-BA-SNP-E27 Battery Adapter with E27 Head × 6
/	AS-BSC Bouncer with Suction Cup for Light Bulb × 4	AS-BSC Bouncer with Suction Cup for Light Bulb × 12
/	User Manual × 1	User Manual × 1
/	Hard Case × 1	Hard Case × 1





## **FC** Series LED Spot Light

*Style meets bi-color, FC Series combine eye-catching aesthetics and outstanding performance in a compact fixture body.*



# FC-300B/500B LED Spot Light



1. CCT range from 2700K to 6500K, CRI average 96, TLCI average 98
2. Respectively rated power of 350W / 520W, achieve 37,340 lux / 65,640 lux @1m with 45° reflector (at 5600K)
3. Built with Bowens mount and an umbrella mount for further light shaping possibilities
4. Easy dimming in 0.1% increments (FC-500B only) and intuitive UI design with 2 inch screen, 2 buttons and 2 knobs
5. Adjustable cooling system includes fan modes: SMART, FULL SPEED, LOW SPEED, OFF
6. Firmware updatable via the USB port



## Includes

Light × 1, Power Supply × 1, Reflector × 1, AC Power Cable 6M × 1,  
\*DC Connection Cable 3M × 1 (\*FC-500B only), User Manual × 1, Carry Case × 1



## Accessories (Optional)



CB-DMX-3.5C-1/2  
DMX Adapter Cable  
with 3.5mm Connector



FL-20G  
Fresnel Lens



PJ-BM-19/36  
Projection Attachment



LT-80/120  
Lantern Softbox  
80cm/120cm



SB-PR-90/120/150-Q  
Parabolic Softbox 90cm/  
120cm/150cm (Quick release)



SB-ST-140x30  
Strip Softbox 140x30cm



U-165DT/U-180ST  
Umbrella 165CM  
Umbrella 180CM



U-135DS  
Umbrella Deep  
Silver 135cm



# FC-300B/500B *Technical Data*

Model	<i>FC-300B</i>	<i>FC-500B</i>
Rated Power	350W	520W
Input Voltage/Current	AC100-240V 50/60Hz, DC48V/6.6A Max	AC100-240V 50/60Hz, DC48V/10.4A Max
CCT	2700K-6500K	
CRI / TLCI	Average 96 / Average 98	
TM-30	Rf: Average 95 / Rg: Average 101	Rf: Average 95 / Rg: Average 100
SSI	3200K: 82 / 5600K: 74	3200K: 84 / 5600K: 74
Dimming	0-100%	0-100%, by 0.1% increment
Control	On-board, Remote Controller, NANLINK APP, DMX/RDM	
Product Size	360.3 × 246.4 × 134.8mm / 14.19 × 9.70 × 5.31"	373.2 × 246.4 × 149mm / 14.69 × 9.70 × 5.87"
Product Weight	2.6kg / 5.73lb	3.16kg / 6.97lb

## Illumination (lux / fc)

Model	<i>FC-300B (3200K)</i>			<i>FC-500B (3200K)</i>		
Distance	1M	2M	3M	1M	2M	3M
Light Only	10627 lux / 987 fc	2741 lux / 255 fc	1319 lux / 123 fc	17660 lux / 1641 fc	4625 lux / 430 fc	2224 lux / 207 fc
With Reflector	34150 lux / 3172 fc	7328 lux / 681 fc	3124 lux / 290 fc	54530 lux / 5066 fc	11660 lux / 1083 fc	5011 lux / 466 fc
With FL-20G Spot	119720 lux / 11122 fc	26214 lux / 2435 fc	11184 lux / 1039 fc	195000 lux / 18115 fc	41230 lux / 3830 fc	17560 lux / 1631 fc
With FL-20G Flood	29780 lux / 2767 fc	7760 lux / 721 fc	3528 lux / 328 fc	45720 lux / 4247 fc	12020 lux / 1117 fc	5481 lux / 509 fc
With PJ-BM-19	/	28284 lux / 2628 fc	10638 lux / 988 fc	/	45440 lux / 4221 fc	17250 lux / 1603 fc
With PJ-BM-36	50791 lux / 4718 fc	8892 lux / 826 fc	3569 lux / 332 fc	86800 lux / 8064 fc	14980 lux / 1392 fc	6114 lux / 568 fc

Model	<i>FC-300B (5600K)</i>			<i>FC-500B (5600K)</i>		
Distance	1M	2M	3M	1M	2M	3M
Light Only	11210 lux / 1041 fc	2882 lux / 268 fc	1380 lux / 128 fc	21110 lux / 1961 fc	5456 lux / 507 fc	2624 lux / 244 fc
With Reflector	37340 lux / 3469 fc	7990 lux / 742 fc	3422 lux / 318 fc	65640 lux / 6098 fc	14120 lux / 1312 fc	6005 lux / 558 fc
With FL-20G Spot	135778 lux / 12614 fc	29022 lux / 2696 fc	12576 lux / 1168 fc	/	52360 lux / 4864 fc	22340 lux / 2075 fc
With FL-20G Flood	30270 lux / 2812 fc	7886 lux / 733 fc	3592 lux / 334 fc	54150 lux / 5031 fc	14360 lux / 1334 fc	6507 lux / 605 fc
With PJ-BM-19	/	31992 lux / 2972 fc	12090 lux / 1123 fc	/	56620 lux / 5260 fc	21550 lux / 2002 fc
With PJ-BM-36	56755 lux / 5273 fc	9909 lux / 921 fc	4014 lux / 373 fc	109000 lux / 10126 fc	18490 lux / 1718 fc	7598 lux / 706 fc

NANLITE



## **FS** Series LED Studio Light

*The FS Series of AC powered LED Studio Light to give maximum output while maintaining an even light spread and a high CRI/TLCI of 96/98, ensuring accurate color rendition.*

## FS Series LED Studio Light

The FS Series comes in 4 sizes, total 7 models in different power from 70W to 350W. It is an AC power LED Studio Light range that with both daylight and bi-color version to meet your different demands. The FS-60B is compatible the FM mount ecosystem.

- 1. Powerful, Even Light Output** The FS series utilizes a larger LED array than most COB LED lights to deliver a powerful as well as smooth and even light spread
- 2. Integrated design with In-Body Cooling** The FS series combines the control part, power supply, and lamp body into one compact unit, making it more lightweight and enables effective heat dissipation
- 3. Endless Light Shaping Possibilities** By utilizing the Bowens mount and incorporating an umbrella holder into the yoke of FS-150/150B/200/200B/300/300B, and FS-60B comes with Bowens mount adapter, the FS series is compatible with a massive selection of light modifiers
- 4. 11/12 Built-in Practical Effects** Making it easy to imitate lighting scenarios that can otherwise be tricky to recreate
- 5. Multiple Control Ways** Could be controlled via on-board, remote controller and NANLINK APP



On-board



Remote Controller



NANLINK APP

### Includes

FS-150/150B/200/200B/300/300B:

Light x 1, Power Cable 4.5M x 1, Reflector x 1, COB Protective Cap x 1, User Manual x 1

FS-60B:

Light x 1, Power Cable 3M x 1, Reflector x 1, AS-BA-FMM Bowens Mount Adapter x 1, COB Protective Cap x 1, User Manual x 1



## FS Series 2Kit & 3Kit



### FS 2KIT-S-LS

Light × 2  
 Power Cable 4.5M × 2  
 Reflector × 2  
 SB-RT-90x60 Softbox × 2  
 LS-186 Light Stand × 2  
 CN-T2 Carrying Case × 1  
 (except FS-60B)



(Light Stands are not included)

### FS 2KIT-S

Light × 2  
 Power Cable 4.5M × 2  
 Reflector × 2  
 SB-RT-90x60 Softbox × 2  
 CN-T2 Carrying Case × 1  
 (except FS-60B)



### FS-150 3KIT-S-LS

Light × 3  
 Power Cable 4.5M × 3  
 Reflector × 3  
 SB-RT-90x60 Softbox × 3  
 LS-186 Light Stand × 3  
 CC-ST-85 Carrying Case × 1



(Light Stands are not included)

### FS-150 3KIT-S

Light × 3  
 Power Cable 4.5M × 3  
 Reflector × 3  
 SB-RT-90x60 Softbox × 3  
 CC-ST-85 Carrying Case × 1



# FS-60B *Technical Data*

Model	<b>FS-60B</b>
Rated Power	70W
Input Voltage/Current	AC100-240V 50/60Hz
CCT	2700K-6500K
CRI / TLCI	Average 96 / Average 97
Dimming	0-100%
Control	On-board, Remote Controller, NANLINK APP
Product Size	247 × 134 × 87mm / 9.72 × 5.28 × 3.43"
Product Weight	0.85kg / 1.87lb

## Illumination (lux / fc)

Model	<i>FS-60B (3200K)</i>			<i>FS-60B (5600K)</i>		
	1M	2M	3M	1M	2M	3M
Light Only	2630 lux 244 fc	679 lux 63 fc	315 lux 29 fc	2799 lux 260 fc	723 lux 67 fc	339 lux 31 fc
With Reflector	12370 lux 1149 fc	2720 lux 253 fc	1175 lux 109 fc	13360 lux 1241 fc	2959 lux 275 fc	1272 lux 118 fc
With FL-11 Spot	30260 lux 2811 fc	7092 lux 659 fc	3080 lux 286 fc	32510 lux 3020 fc	7635 lux 709 fc	3318 lux 308 fc
With FL-11 Flood	7645 lux 710 fc	1805 lux 168 fc	810 lux 75 fc	8223 lux 764 fc	1932 lux 179 fc	871 lux 81 fc
With PJ-FMM-19	41450 lux 3851 fc	7718 lux 717 fc	3191 lux 296 fc	44320 lux 4117 fc	8292 lux 770 fc	3360 lux 312 fc
With PJ-FMM-36	16470 lux 1530 fc	3134 lux 291 fc	1303 lux 121 fc	17730 lux 1647 fc	3451 lux 321 fc	1425 lux 132 fc



# FS-150/150B *Technical Data*

Model	<b>FS-150</b>	<b>FS-150B</b>
Rated Power	185W	175W
Input Voltage/Current	AC100-240V 50/60Hz	
CCT	5600K	2700K-6500K
CRI / TLCI	96 / 98	Average 96 / Average 97
Dimming	0-100%	
Control	On-board, Remote Controller, NANLINK APP	
Product Size	356 × 213 × 115mm / 14.02 × 8.39 × 4.53"	
Product Weight	2.27kg / 5.00lb	2.3kg / 5.07lb

## Illumination (lux / fc)

Model	<b>FS-150 (5600K)</b>			<b>FS-150B (3200K)</b>			<b>FS-150B (5600K)</b>		
	<b>1M</b>	<b>2M</b>	<b>3M</b>	<b>1M</b>	<b>3M</b>	<b>5M</b>	<b>1M</b>	<b>3M</b>	<b>5M</b>
Light Only	6903 lux 641 fc	1721 lux 160 fc	814 lux 76 fc	6126 lux 569 fc	743 lux 69 fc	302 lux 28 fc	7298 lux 678 fc	883 lux 82 fc	362 lux 34 fc
With Reflector	26380 lux 2451 fc	5651 lux 525 fc	2422 lux 225 fc	21890 lux 2034 fc	2094 lux 195 fc	787 lux 73 fc	26300 lux 2443 fc	2497 lux 232 fc	939 lux 87 fc
With FL-20 Spot	54890 lux 5099 fc	11360 lux 1055 fc	4737 lux 440 fc	120000 lux 11148 fc	11970 lux 1112 fc	4151 lux 386 fc	142000 lux 13192 fc	14660 lux 1362 fc	5056 lux 470 fc
With FL-20 Flood	15920 lux 1479 fc	3914 lux 364 fc	1741 lux 162 fc	16850 lux 1565 fc	2023 lux 188 fc	785 lux 73 fc	19920 lux 1851 fc	2399 lux 223 fc	926 lux 86 fc
With PJ-BM-19	86630 lux 8048 fc	11200 lux 1040 fc	4220 lux 392 fc	/	11040 lux 1026 fc	3468 lux 322 fc	/	13210 lux 1227 fc	4141 lux 385 fc
With PJ-BM-36	21600 lux 2007 fc	3826 lux 355 fc	1558 lux 145 fc	61830 lux 5744 fc	3944 lux 366 fc	1300 lux 121 fc	74520 lux 6923 fc	4700 lux 437 fc	1547 lux 144 fc

# FS-200/200B *Technical Data*

Model	<b>FS-200</b>	<b>FS-200B</b>
Rated Power	240W	220W
Input Voltage/Current	AC100-240V 50/60Hz	
CCT	5600K	2700K-6500K
CRI / TLCI	96 / 98	Average 96 / Average 97
Dimming	0-100%	
Control	On-board, Remote Controller, NANLINK APP	
Product Size	309 × 232 × 123mm / 12.17 × 9.13 × 4.84"	
Product Weight	2.48kg / 5.47lb	2.6kg / 5.73lb

## Illumination (lux / fc)

Model	<b>FS-200 (5600K)</b>			<b>FS-200B (3200K)</b>			<b>FS-200B (5600K)</b>		
Distance	1M	2M	3M	1M	3M	5M	1M	3M	5M
Light Only	7852 lux 729 fc	1978 lux 184 fc	951 lux 88 fc	7845 lux 729 fc	928 lux 86 fc	376 lux 35 fc	8578 lux 797 fc	1021 lux 95 fc	412 lux 38 fc
With Reflector	29380 lux 2729 fc	6388 lux 593 fc	2776 lux 258 fc	26810 lux 2491 fc	2456 lux 228 fc	919 lux 85 fc	29490 lux 2740 fc	2731 lux 254 fc	1016 lux 94 fc
With FL-20 Spot	53858 lux 5003 fc	11216 lux 1042 fc	4732 lux 440 fc	142000 lux 13192 fc	13650 lux 1268 fc	4754 lux 442 fc	158000 lux 14678 fc	15270 lux 1419 fc	5266 lux 489 fc
With FL-20 Flood	18160 lux 1687 fc	4527 lux 421 fc	2027 lux 188 fc	21880 lux 2033 fc	2626 lux 244 fc	1007 lux 94 fc	23900 lux 2220 fc	2880 lux 268 fc	1101 lux 102 fc
With PJ-BM-19	89590 lux 8323 fc	11620 lux 1079 fc	4476 lux 416 fc	/	14260 lux 1325 fc	4681 lux 435 fc	/	16010 lux 1487 fc	5203 lux 483 fc
With PJ-BM-36	22860 lux 2124 fc	4065 lux 378 fc	1630 lux 151 fc	71040 lux 6600 fc	5180 lux 481 fc	1783 lux 166 fc	78100 lux 7255 fc	5763 lux 535 fc	1968 lux 183 fc

# FS-300/300B *Technical Data*

Model	<i>FS-300</i>	<i>FS-300B</i>
Rated Power	350W	
Input Voltage/Current	AC100-240V 50/60Hz	
CCT	5600K	2700K-6500K
CRI / TLCI	96 / 98	Average 96 / Average 97
Dimming	0-100%	
Control	On-board, Remote Controller, NANLINK APP	
Product Size	342.5 × 232 × 123mm / 13.48 × 9.13 × 4.84"	
Product Weight	2.95kg / 6.49lb	3.03kg / 6.68lb

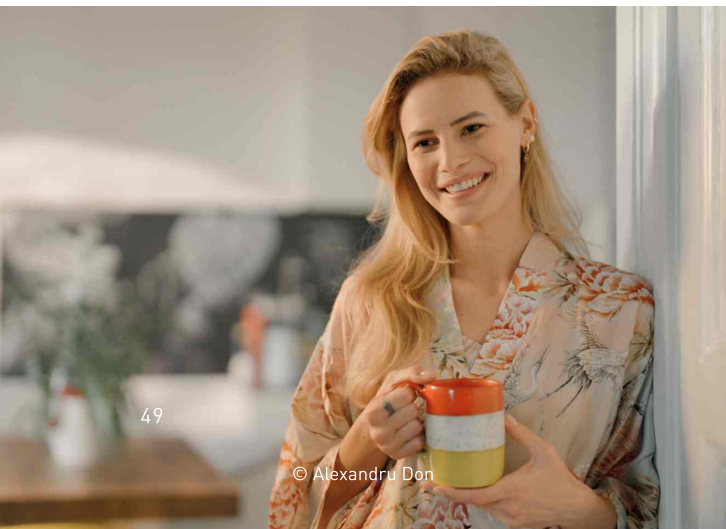
## Illumination (lux / fc)

Model	<i>FS-300 (5600K)</i>			<i>FS-300B (3200K)</i>			<i>FS-300B (5600K)</i>		
Distance	1M	2M	3M	1M	3M	5M	1M	3M	5M
Light only	12550 lux 1166 fc	3074 lux 286 fc	1447 lux 134 fc	11150 lux 1036 fc	1406 lux 131 fc	605 lux 56 fc	11130 lux 1034 fc	1394 lux 130 fc	603 lux 56 fc
With Reflector	41040 lux 3813 fc	8852 lux 822 fc	3780 lux 351 fc	38900 lux 3614 fc	3529 lux 328 fc	1366 lux 127 fc	38720 lux 3597 fc	3522 lux 327 fc	1346 lux 125 fc
With FL-20 Spot	56800 lux 5277 fc	11840 lux 1100 fc	5012 lux 466 fc	159000 lux 14771 fc	10550 lux 980 fc	6062 lux 563 fc	158000 lux 14678 fc	10340 lux 961 fc	6026 lux 560 fc
With FL-20 Flood	26270 lux 2440 fc	6648 lux 618 fc	3012 lux 280 fc	29820 lux 2770 fc	3401 lux 316 fc	1319 lux 123 fc	29510 lux 2741 fc	3395 lux 315 fc	1309 lux 122 fc
With PJ-BM-19	81300 lux 7553 fc	10500 lux 975 fc	3979 lux 370 fc	/	15430 lux 1433 fc	4922 lux 457 fc	/	15300 lux 1421 fc	4910 lux 456 fc
With PJ-BM-36	19690 lux 1829 fc	3628 lux 337 fc	1480 lux 137 fc	78060 lux 7252 fc	5511 lux 512fc	1863 lux 173 fc	77820 lux 7229 fc	5497 lux 511 fc	1856 lux 172 fc



# MixPanel LED RGBWW Panel Light

RGBWW LED Panel, DMX and 2.4G wireless control, Gel emulation and practical effects. Multiple lighting sources, high brightness output in a compact size.



# MixPanel 60/150 LED RGBWW Panel Light

- 1. CCT** Color temperature of 2700-7500K, G/M adjustment  
**HSI** Give you full color of hue and saturation to achieve up to 36,000 colors  
**RGBW** Four separate channels of red, green, blue and white colors to provide colors with enormous quantity
- 2. GEL** 43 gel presets allows for colorful creativity at a push of a button.
- 3. Practical Effects** Built-in 10 pre-programmed special effects, easily simulate various scenarios.
- 4. Three Light Sources in One** Switch between hard light, soft light, and colored light at the touch of a button.
- 5. Three Lighting Modes in One** Included silent mode, normal mode and boost mode, make operating in the strictest sound conditions possible.
- 6. Dual Power Supply & USB Port to Support Firmware Updates.**  
**Multiple Light Shaping Accessories** Octagonal Softbox etc.



## Includes

Light x 1, Barndoor x 1, Power Adapter x 1, Power Cable x 1, User Manual x 1, Carrying Bag x 1

## Accessories (Optional)



# MixPanel 60/150 *Technical Data*

Model	<i>MixPanel 60</i>				<i>MixPanel 150</i>				
Rated Power	64W				164W				
Input Voltage/Current	DC 15V/6A Max, AC 100-240V 50/60Hz				DC 24V/7.5A Max, AC 100-240V 50/60Hz				
CRI	Average 95								
TLCI	Average 95								
CCT	2700K - 7500K (G/M ±50)								
Dimming	0-100%								
Control	On-board, Remote Controller, NANLINK APP, DMX								
Special Lighting Effects	Hue Loop, CCT Loop, Flash, Pulse, Storm, Police Car, TV, Paparazzi, Candle / Fire, Disco								
Product Size	426 × 370 × 82mm / 16.77 × 14.57 × 3.23"				482 × 435 × 82mm / 18.98 × 17.13 × 3.23"				
Product Weight	Light fixture	3.3kg / 7.28lb				4.1kg / 9.04lb			
	Light+Adapter	3.75kg / 8.27lb				4.67kg / 10.3lb			

## Illumination (lux / fc)

Model	<i>MixPanel 60</i>					<i>MixPanel 150</i>				
Distance	1M	2M	3M	4M	5M	1M	2M	3M	4M	5M
2700K	4756 lux 442 fc	1290 lux 120 fc	596 lux 55 fc	345 lux 32 fc	228 lux 21 fc	10360 lux 966 fc	2869 lux 268 fc	1327 lux 124 fc	768 lux 72 fc	507 lux 47 fc
3200K	5438 lux 505 fc	1485 lux 138 fc	690 lux 64 fc	395 lux 37 fc	261 lux 24 fc	12330 lux 1150 fc	3401 lux 317 fc	1557 lux 145 fc	904 lux 84 fc	600 lux 56 fc
5600K	5844 lux 543 fc	1574 lux 146 fc	729 lux 68 fc	422 lux 39 fc	279 lux 26 fc	13880 lux 1294 fc	3731 lux 348 fc	1746 lux 163 fc	1007 lux 94 fc	663 lux 62 fc
7500K	5695 lux 529 fc	1534 lux 143 fc	707 lux 66 fc	410 lux 38 fc	271 lux 25 fc	13280 lux 1238 fc	3604 lux 336 fc	1641 lux 153 fc	957 lux 89 fc	633 lux 59 fc
R	1600 lux 149 fc	429 lux 40 fc	198 lux 18 fc	116 lux 11 fc	77 lux 7 fc	2841 lux 265 fc	758 lux 71 fc	347 lux 32 fc	203 lux 19 fc	135 lux 13 fc
G	3613 lux 336 fc	958 lux 89 fc	444 lux 41 fc	259 lux 24 fc	174 lux 16 fc	6111 lux 570 fc	1640 lux 153 fc	758 lux 71 fc	444 lux 41 fc	296 lux 28 fc
B	690 lux 64 fc	185 lux 17 fc	85 lux 8 fc	50 lux 5 fc	33 lux 3 fc	1240 lux 116 fc	330 lux 31 fc	152 lux 14 fc	89 lux 8 fc	60 lux 6 fc

# MixPad II 11C/27C LED RGBWW Panel Light



1. Studio Quality Lighting: NANLITE MixPad II series LED panels create bright, color accurate studio lighting with minimal setup and complications, perfect for live streaming, vlogging, photography, video and more.
2. Plus the Versatility of Three Different LED Light Sources: Switch between a traditional multi-LED array for hard light with more throw, a diffuse SMD LED panel for soft, flattering light, and a tunable RGB array for colorful, creative effects at the push of a button.
3. Choose from 15 customizable creative effects.
4. With Multiple Power Options: Perfect for use in the studio or on location, the MixPad II 27C can run off either the included AC adapter, 2x Sony NP-F batteries (Not Included), V-mount battery with D-tap cable (not included).



MixPad II 11C

MixPad II 27C

## Includes

MixPad II 11C: Light x 1, 7.5V 2A Power Adapter x 1 (Optional), User Manual x 1

MixPad II 27C: Light x 1, 15V 2.4A Power Adapter x 1, User Manual x 1

## Accessories (Optional)



NP-F  
Battery



CN-58  
2 in 1 Charger



AS-MT/HG-1/4  
Mini Tripod & Hand Grip  
with 1/4"-20 Mount



BD-MPII11C  
Barndoor for MixPad II 11C



BD-MPII27+SB  
Barndoor with Softbox  
for MixPad II 27C



EC-LP25  
Eggcrate for  
LumiPad 25 / MixPad II 27C

# MixWand 18 II LED RGBWW Wand Light

1. Three Lights in ONE Wand: Tunable RGB, adjustable 30°/45° luminous surface with warm and cold light.
2. Combines an advanced SMD lens technology design with increased light output.
3. Built-in flash and color cycle mode in the handheld wand to create different changing shooting effects, expand more possibilities.
4. With improved housing and compact handheld design the MixWand 18II is perfect for light painting, photography lighting and video production.
5. Optimized for use in the studio or on location, MixWand 18II can be powered up with the included power adapter or the NP-F series batteries (not included).
6. The optional barndoor with diffuser, make it easy to control over the shape and direction of the light.



## Includes

Light × 1, Power Adapter (Power cable 2M with DC plug) × 1, Power Adapter Connector Plug × 1, Safety Strap × 1, User Manual × 1, Carrying Bag × 1

## Accessories (Optional)



WS-RC-C2  
2.4G Remote Controller



NP-F  
Battery



CN-58  
2 in 1 Charger



WS-TB-1



AS-BH-1/4  
Mini Ball Head  
with 1/4''-20 Mount



BD-MW18II+DF  
Barndoor with Diffuser



# MixPad II 11C/27C/MixWand 18II Technical Data

Model	MixPad II 11C	MixPad II 27C	MixWand 18II
Rated Power	13W	36W	22W
Input Voltage/Current	DC 7.2-15V	DC 15V/2.4A Max, AC 100-240V 50/60Hz	DC 15V/1.6A Max, AC 100-240V 50/60Hz
CRI	Average 95		
TLCI	Average 98		Average 95
CCT	2700K-6500K		3200K-5600K
Dimming	0-100%		
Control	On-board, NANLINK APP		On-board, Remote Controller, NANLINK APP
Product Size	165 × 165 × 35mm / 6.50 × 6.50 × 1.38"	348 × 57 × 322mm / 13.70 × 2.24 × 12.67"	590 × 67 × 36.8mm / 23.23 × 2.64 × 1.49"
Product Weight	0.34kg / 0.75lb	1.35kg / 2.97lb	0.49kg / 1.08lb

## Illumination (lux / fc)

Model	MixPad II 11C			MixPad II 27C			MixWand 18II			
Distance	1M	2M	3M	1M	2M	3M	Distance	1M	2M	3M
3200K (Hard)	819 lux 76 fc	205 lux 19 fc	91 lux 8 fc	2898 lux 269 fc	724 lux 67 fc	322 lux 30 fc	3200K (30°)	2390 lux 222 fc	694 lux 64 fc	322 lux 30 fc
5600K (Hard)	842 lux 78 fc	211 lux 20 fc	94 lux 9 fc	2898 lux 269 fc	725 lux 67 fc	322 lux 30 fc	5600K (30°)	2760 lux 256 fc	807 lux 75 fc	377 lux 35 fc
3200K (Soft)	141 lux 13 fc	35 lux 3 fc	16 lux 1 fc	450 lux 42 fc	113 lux 10 fc	50 lux 5 fc	3200K (45°)	1460 lux 136 fc	405 lux 38 fc	185 lux 17 fc
5600K (Soft)	161 lux 15 fc	40 lux 4 fc	18 lux 2 fc	500 lux 46 fc	125 lux 12 fc	56 lux 5 fc	5600K (45°)	1740 lux 162 fc	471 lux 44 fc	213 lux 20 fc
R	280 lux 26 fc	70 lux 6 fc	31 lux 3 fc	1000 lux 93 fc	250 lux 23 fc	111 lux 10 fc	R	321 lux 30 fc	89 lux 8 fc	42 lux 4 fc
G	632 lux 59 fc	158 lux 15 fc	70 lux 7 fc	2132 lux 198 fc	533 lux 50 fc	237 lux 22 fc	G	600 lux 56 fc	163 lux 15 fc	75 lux 7 fc
B	118 lux 11 fc	30 lux 3 fc	13 lux 1 fc	389 lux 36 fc	97 lux 9 fc	43 lux 4 fc	B	174lux 16fc	48lux 4fc	22lux 2fc

# LumiPad LED Soft Panel Light

Bi-color, Slim Design, High Output, High CRI

The LumiPad series LED panels combine compact design and impressive brightness making them an ideal option for live streaming, vlogging, photography lighting, video lighting, photo booths and more.

1. Create diffuse, color accurate, easily achieve beautiful results without adding plastic filters or cloth diffusion.
2. Adjustable color temperature (3200K-5600K). High CRI and good light quality.
3. Mounting Options:
  - LumiPad 11: 1/4 20" mount and Cold Shoe
  - LumiPad 25: 5/8" receiver.
4. Power Options: Run with either the AC power adapter or optional NP-F batteries.



On-board



Remote Controller  
(LumiPad 11 Only)



NANLINK APP  
(LumiPad 11 Only)

## LumiPad 25 Lighting kit

Portable and powerful lighting kit,  
provide a quick and easy lighting solution to meet more shootings.

### LumiPad 25 2KIT

Light x 2, LS-170-5/8 x 2, Light Handle x 2, Power Adapter x 2, Carrying Bag x 1



LumiPad 25

LumiPad 11

### Includes

- LumiPad 11: Light x 1
- LumiPad 25: Light x 1, 15V2A Power Adapter x 1

### Accessories (Optional)

- Tripod & Handle, Battery & Charger, EC-LP25 Eggcrate,
- WS-RC-C2 2.4G Remote Controller [Only available for LumiPad 11]



# LumiPad 11/25 *Technical Data*

Model	<i>LumiPad 11</i>	<i>LumiPad 25</i>
Rated Power	11.5W	25W
Input Voltage/Current	AC 100-240V Sony Battery , NP-F Series Battery, 7.2-15V DC	15V 2A DC, NP-F Series Battery
CCT	3200K - 5600K	
CRI / TLCI	95 / 93	
Dimming	0-100%	
Control	On-board, Remote Controller, NANLINK APP	On-board
Product Size	165 x 165 x 35mm / 6.5 x 6.5 x 1.38"	310 x 345 x 55mm / 12.2 x 13.6 x 2.17"
Product Weight	0.25kg / 0.55lb	1.01kg / 2.23lb

## Illumination (lux / fc)

Model	<i>LumiPad 11</i>				<i>LumiPad 25</i>			
Distance	0.5M	1M	2M	3M	0.5M	1M	2M	3M
3200K	1273 lux / 118 fc	320 lux / 30 fc	76 lux / 7 fc	36 lux / 3 fc	3457 lux / 322fc	867 lux / 81fc	216 lux / 20 fc	97 lux / 9 fc
5600K	1278 lux / 119 fc	337 lux / 31 fc	75 lux / 7 fc	39 lux / 4 fc	3570 lux / 332 fc	930 lux / 86 fc	232 lux / 22fc	104 lux / 10fc



## Compac Series LED Studio Light

Combines a slim profile with an impressive output to create lighting similar to large softboxes but at a fraction of the size.

It is an ideal option for lighting portraits, interviews, head shots, live streaming, food photography, vlogging, product photography, and more.

## Compac Series LED Studio Light

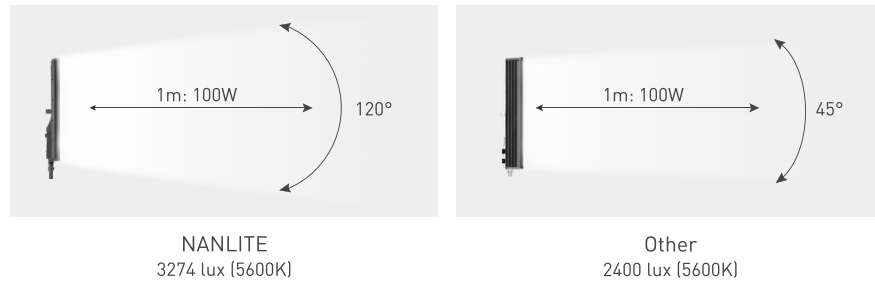
The Compac series comes in 6 sizes in different power outputs from 20W to 200W, with daylight and bi-color versions to meet your different shooting requirements.



Daylight	Compac 200	Compac 100	Compac 68	Compac 40	Compac 24	Compac 20
Bi-color	Compac 200B	Compac 100B	Compac 68B	Compac 40B	Compac 24B	

## Main Features

1. Combining a space-saving design with impressive output, achieves lighting similar to a large softbox but at a fraction of the size and none of the set up time.
2. Quickly achieve beautiful, studio-quality results without adding plastic filters or cloth diffusion. Rear controls enable you to dial in brightness from 0-100%.  
\*Compac 200/200B has 2.4Ghz module inside, can be controlled via NANLINK APP through NANLINK BOX.
3. Multiple lighting modifiers, allowing you to control the lighting of Compac more easily.



### Includes

Light x 1, Power Cable x 1

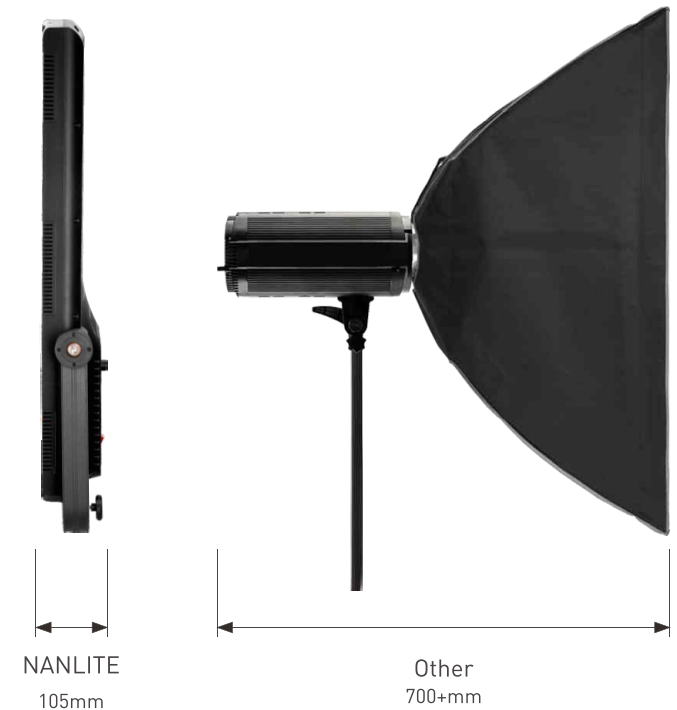
### Lighting Modifiers (Optional)

#### Round Softbox / Lantern Softbox for Compac 200/200B/100/100B/68/68B

Providing a softer, larger and more evenly fill light solution with the softbox.

#### Eggcrate for 200/200B/100/100B

Providing directional control of the output, keeps light off the background, and allows you to light specific areas of your subject.



### Compac 24B DTK

#### Compac 24B Desk Top 1 Kit

- Light x 1
- Power Cable x 1
- Desktop Stand x 1



### Compac 24B DT2K

#### Compac 24B Desk Top 2 Kit

- Light x 2
- Power Cable x 2
- Desktop Stand x 2



### Compac 20 2KIT

- Light x 2
- Folding Photo Table x 1
- Background Papers x 1
- Adjustable Bracket x 2
- LS-DT-5/8 Desktop Light Stand x 2
- Connecting Base x 2
- Carrying Bag x 1



### Compac 100 4KIT+T

#### with Green Background Whole Set

- Light x 4
- Power Cable x 4
- LS-288-5/8 Light Stand x 4
- U Shape Background(include frame and green cloth) x 1



### Compac 20 3KIT

- Light x 3
- Folding Photo Table x 1
- Background Papers x 1
- Adjustable Bracket x 3
- LS-DT-5/8 Desktop Light Stand x 2
- Connecting Base x 3
- Carrying Bag x 1
- LS-60-5/8 Light Stand x 1



NOTE: More lighting setup solutions for live-streaming, please visit [www.nanlite.com](http://www.nanlite.com).

# Compac *Technical Data*

Model	<i>Compac 20</i>	<i>Compac 24/24B</i>	<i>Compac 40/40B</i>	<i>Compac 68/68B</i>	<i>Compac 100/100B</i>	<i>Compac 200/200B</i>
Rated Power	20W	24W	40W	68W	100W	200W
Input Voltage/Current	100-240V AC					
CRI	95					
TLCI	93					
CCT	5600K	5600K / 3200K-5600K				
Dimming	NO	0-100%				
Control	On-board					On-board, Remote Controller, NANLINK APP
Product Size	205 x 140 x 40mm 8.1 x 5.5 x 1.6"	316 x 172 x 75mm 12.4 x 6.8 x 3.0"	408 x 232 x 80mm 16.1 x 9.1 x 3.2"	566 x 350 x 90mm 22.3 x 13.8 x 3.5"	664 x 400 x 85mm 26.1 x 15.7 x 3.3"	818 x 500 x 105mm 32.2 x 19.7 x 4.1"
Product Weight	0.35kg / 0.77lb	0.72kg / 1.59lb	1.3kg / 2.87lb	2.5kg / 5.51lb	3.3kg / 7.28lb	6kg / 13.22lb

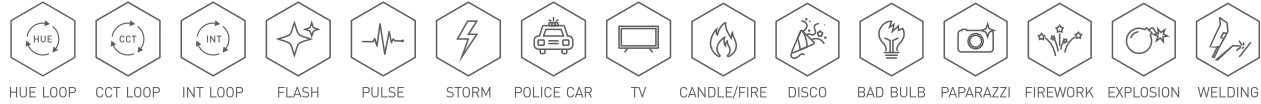
## Illumination (lux / fc)

Model	<i>Compac 20</i>	<i>Compac 24</i>	<i>Compac 24B</i>		<i>Compac 40</i>	<i>Compac 40B</i>	
CCT	5600K	5600K	3200K	5600K	5600K	3200K	5600K
1M	420	716	670	690	1255	1450	1540
2M	105	187	156	168	343	345	367
3M	56	84	69	74	157	150	163
4M	20	49	40	42	94	85	94

Model	<i>Compac 68</i>	<i>Compac 68B</i>		<i>Compac 100</i>	<i>Compac 100B</i>		<i>Compac 200</i>	<i>Compac 200B</i>	
CCT	5600K	3200K	5600K	5600K	3200K	5600K	5600K	3200K	5600K
1M	2052	2263	2245	3274	2744	2862	4960	4299	4751
2M	540	554	554	886	704	731	1359	1208	1224
3M	245	248	245	396	314	392	616	551	553
4M	146	145	145	235	182	189	363	318	323



# LitoLite 5C *Tiny Box, Strong Output, Huge Versatility*



1. Wide CCT range of 2700K-7500K with G/M adjustment, CRI: Average 95, TLCI: Average 97
2. Featuring a full control of intensity, hue and saturation, the LitoLite 5C provides a choice of 36000 colors in HSI mode.
3. 15 built-in customizable practical effects, helping creatives simulate accurate lighting scenarios in a second.
4. With a unique magnetic design, allowing it to easily be placed anywhere, ensuring you always get the lighting that you want.
5. Built-in battery offers up to 90 mins run time at full power.



## Battery Run Time

Charge Time: 2.3 hours

Battery Run Time: 90 mins, up to 19.5 hours



On-board



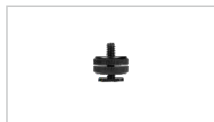
NANLINK APP



## Includes

Light x 1, Diffuser x 1, USB Type-C Cable x 1, User Manual x 1, Carrying Bag x 1

## Accessories (Optional)



AS-CSA-1/4  
Cold Shoe Adapter  
with 1/4"-20 Mount



AS-BH-1/4  
Mini Ball Head  
with 1/4"-20 Mount



BT-BG-F550  
NP-F550 Battery Grip  
with USB Type-C Cable



AS-MT/HG-1/4  
Mini Tripod & Hand Grip  
with 1/4"-20 Mount



AS-WB-LL5C  
Waterproof Bag  
for LitoLite 5C



AS-BD-LL5C  
Bulb Diffuser  
for LitoLite 5C

## LitoLite 5C Technical Data

Model	<b>LitoLite 5C</b>
Rated Power	7W
Input Voltage/Current	DC 5V/2A
CRI	Average 95
TLCI	Average 97
CCT	2700K-7500K (G/M±100)
Dimming	0-100%
Control	On-board, NANLINK APP
Product Size	108 × 22 × 60mm / 4.25 × 0.87 × 2.36"
Product Weight	0.138kg / 0.31lb

### Illumination (lux / fc)

CCT		2700K	3200K	5600K	6500K	7500K	R	G	B
Without Diffuser	0.3M	7236 lux / 672 fc	6205 lux / 576 fc	6582 lux / 611 fc	6827 lux / 634 fc	7480 lux / 695 fc	1148 lux / 107 fc	2408 lux / 224 fc	480 lux / 45 fc
	0.5M	2425 lux / 225 fc	2190 lux / 203 fc	2351 lux / 218 fc	2340 lux / 217 fc	2496 lux / 232 fc	390 lux / 36 fc	822 lux / 76 fc	150 lux / 14 fc
	1M	594 lux / 55 fc	536 lux / 50 fc	581 lux / 54 fc	574 lux / 53 fc	616 lux / 57 fc	99 lux / 9 fc	203 lux / 19 fc	37 lux / 3 fc
	2M	145 lux / 13 fc	131 lux / 12 fc	141 lux / 13 fc	139 lux / 13 fc	149 lux / 14 fc	24 lux / 2 fc	50 lux / 5 fc	8 lux / 1 fc
With Diffuser	0.3M	953 lux / 89 fc	867 lux / 81 fc	943 lux / 88 fc	936 lux / 87 fc	1006 lux / 93 fc	179 lux / 17 fc	460 lux / 43 fc	92 lux / 9 fc
	0.5M	305 lux / 28 fc	280 lux / 26 fc	301 lux / 28 fc	301 lux / 28 fc	324 lux / 30 fc	60 lux / 6 fc	148 lux / 14 fc	29 lux / 3 fc

## halo Series LED Ring Light

Soft ring light, high brightness with soft light, create “diamond” ring in your eyes.

Perfect for portrait photography, video production, wedding photography, vlogging, cosmetology, hair dressing, still life shooting, makeup tutorial and more.

© Phil Stevens

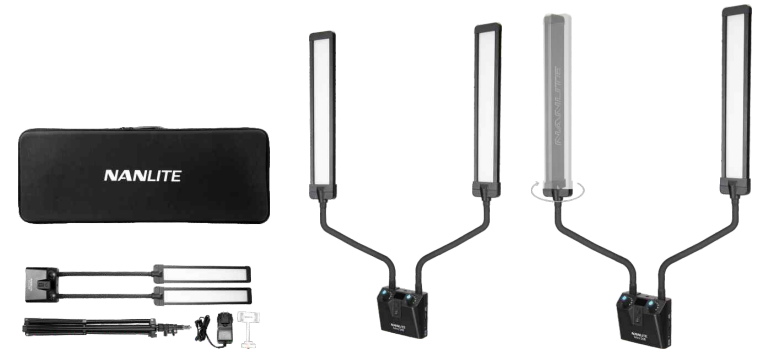


# Mira 26B

Dimmable Bi-color Beauty Light with Dual Flex Arms and USB Power Passthrough.

### Includes

Light x 1, Power Adapter x 1, Cellphone Bracket x 1, Carrying Bag x 1, LS-170-5/8 Light Stand x 1 (Optional)



# halo Series Ring Light



halo 14

halo 16

halo 16C

halo 18

### halo Carrying Case



CC-S-H14  
Carrying Bag  
for halo 14



CC-S-H16  
Carrying Bag  
for halo 16

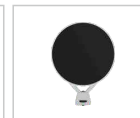


CC-S-H18  
Carrying Bag  
for halo 18

### Accessories (Optional)



AS-Mirror-8  
Mirror 8"  
Dual-side



AS-Mirror-7  
Mirror 7"  
One-sided



AS-Bracket-P  
Cell Phone  
Bracket



LS-DT-5/8  
Desktop Light  
Stand with  
5/8 Mount



AS-Bracket-C  
Camera Bracket  
for halo 16 /  
halo 18 / halo 14

# Mira 26B / halo *Technical Data*

Model	<b>Mira 26B</b>	<b>halo 14</b>
Rated Power	26W x 2	24W
Input Voltage /Current	DC 15V2.4A, AC 110-240V	100-240V AC
CRI	95	
CCT	2700K, 3200K, 4300K, 5600K, 6500K	2700K-6500K
Dimming	0-100%	
Control	On-board	
Product Size	690 x 118 x 53mm 27.2 x 4.7 x 2.1"	out-diameter: 345mm / 13.6" in-diameter: 265mm / 10.4"
Product Weight	0.84kg / 1.86lb	0.65kg / 1.43lb

## illumination (lux / fc)

Model	<b>Mira 26B</b>				<b>halo 14</b>	
Distance	2700K	3200K	5600K	6500K	3200K	5600K
1M	600 lux 56 fc	609 lux 57 fc	631 lux 59 fc	664 lux 62 fc	430 lux 40 fc	435 lux 40 fc
2M	148 lux 14 fc	153 lux 14 fc	162 lux 15 fc	170 lux 16 fc	135 lux 13 fc	135 lux 13 fc
3M	81 lux 8 fc	83 lux 8 fc	85 lux 8 fc	86 lux 8 fc	74 lux 7 fc	75 lux 7 fc

# halo *Technical Data*

Model	<i>halo 16</i>	<i>halo 16C</i>	<i>halo 18</i>
Rated Power	29W	28W	48W
Input Voltage /Current	12-18V DC: NP-F Series Battery	12-16.8V DC, 100-240V AC	100-240V AC
CCT	3200K-5600K	2700K-6500K	
CRI	95		
Dimming	0-100 %		
Control	On-board, Remote Controller		On-board
Product Size	out-diameter: 400mm / 15.7" in-diameter: 305mm / 12"	out-diameter: 406.2mm / 16" in-diameter: 312.8mm / 12.3"	out-diameter: 456mm / 18.3" in-diameter: 305mm / 12"
Product Weight	0.95kg / 2.09lb	1.92kg / 4.2lb	1.55kg / 3.41lb

## illumination (lux / fc)

Model	<i>halo 16</i>		<i>halo 16C</i>					<i>halo 18</i>	
Distance	3200K	5600K	2700K	6500K	R	G	B	3200K	5600K
1M	470 lux 44 fc	487 lux 45 fc	456 lux 42 fc	490 lux 46 fc	171 lux 16 fc	280 lux 26 fc	84 lux 8 fc	846 lux 80 fc	826 lux 77 fc
2M	146 lux 14 fc	155 lux 14 fc	126 lux 12 fc	126 lux 12 fc	46 lux 4 fc	75 lux 7 fc	22 lux 2 fc	238 lux 22 fc	229 lux 21 fc
3M	78 lux 7 fc	86 lux 8 fc	59 lux 5 fc	59 lux 5 fc	22 lux 2 fc	36 lux 3 fc	11 lux 1 fc	113 lux 11 fc	109 lux 10 fc



NANLITE

## *Lighting Modifiers*

Lighting modifier is the key to creating amazing images. Each NANLITE lighting modifier has its own effect on continuous lighting and provide more lighting effects possibilities. Different sizes and styles can fit your different requirements.

# Lighting Modifiers



## Softbox FM Mount 60

Item No.: SB-FMM-60  
 Dimension:  $\phi 58 \times 30 \text{cm} / 22.83 \times 11.81''$   
 Weight: 1.24kg / 2.73lb  
 Compatibility:  
 FM mount & Bowens mount  
 Fabric Eggcrate: EC-FMM-60 (Optional)  
 Includes 2 outer diffusers: 1 and 2 Stops



## Softbox Parabolic 90 (Quick Release)

Item No.: SB-PR-90-Q  
 Dimension:  $\phi 90 \times 63 \text{cm} / 35.43 \times 24.80''$   
 Weight: 1.46kg / 3.22lb  
 Compatibility: Bowens mount  
 Fabric Eggcrate: EC-PR90 (Optional)  
 Includes 2 outer diffusers: 1 and 2 Stops



## Softbox Parabolic 120 (Quick Release)

Item No. : SB-PR-120-Q  
 Dimension:  $\phi 120 \times 74 \text{cm} / 47.24 \times 29.13''$   
 Weight: 1.86kg / 4.10lb  
 Compatibility: Bowens mount  
 Fabric Eggcrate: EC-PR120 (Optional)  
 Includes 2 outer diffusers: 1 and 2 Stops



## Softbox Parabolic 150 (Quick Release)

Item No.: SB-PR-150-Q  
 Dimension:  $\phi 150 \times 110 \text{cm} / 59.06 \times 43.31''$   
 $\phi 150 \times 88 \text{cm} / \phi 59.06 \times 34.65''$   
 Weight: 1.86kg / 4.10lb  
 4.05kg / 8.93lb  
 Compatibility: Bowens mount  
 Fabric Eggcrate: EC-PR150 (Optional)  
 Includes 2 outer diffusers: 1 and 2 Stops



## Rectangular Softbox 90x60

Item No.: SB-RT-90X60  
 Dimension:  
 Unfolded size:  
 $900 \times 600 \times 300 \text{mm} / 35.43 \times 23.62 \times 11.81''$   
 Folded size:  
 $550 \times 205 \times 50 \text{mm} / 21.65 \times 8.07 \times 1.97''$   
 Weight: 0.77kg / 1.70lb  
 Compatibility: Bowens mount  
 Fabric Eggcrate: N/A



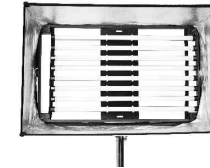
## Strip Softbox 140x30

Item No.: SB-ST-140x30  
 Dimension:  
 $1400 \times 300 \times 400 \text{mm} / 55.12 \times 11.81 \times 15.75''$   
 Weight: 1.35kg / 2.98lb  
 Compatibility: Bowens mount  
 Fabric Eggcrate: Optional



## Asymmetric Softbox 110x45

Item No.: SB-AS-110x45  
 Dimension:  
 $1100 \times 430 \times 340 \text{mm} / 43.31 \times 16.93 \times 13.39''$   
 Weight: 1.13kg / 2.49lb  
 Compatibility: Bowens mount  
 Fabric Eggcrate: Optional



## Nanlite 8 Tube Lights Frame with Softbox for 30C/30X

Item No.: FR-T12-8+SB  
 Dimension:  
 Eight Lights Frame  $1522 \times 148 \times 980 \text{mm} / 59.92 \times 5.83 \times 38.58''$   
 Softbox  $1300 \times 900 \times 480 \text{mm} / 51.18 \times 35.43 \times 18.90''$   
 Weight:  
 Eight Lights Frame: 16.4kg / 36.16lb  
 Softbox: 2.1kg / 4.63lb  
 Compatibility: PavoTube II 30C/II 30X 8KIT  
 Other T12 tube lights with a similar size in the market  
 Fabric Eggcrate: Included





### Lantern Softbox 60

Item No.: LT-FMM-60

Dimension:

φ450mm, 430mm height

φ17.72", 16.93" height

Weight: 0.53kg / 1.67lb

Compatibility:

FM mount & Bowens mount

Skirt: Included



### Lantern Softbox 80

Item No.: LT-80

Dimension:

φ800mm, 580mm height

φ31.50", 22.83" height

Weight: 1.31kg / 2.89lb

Compatibility: Bowens mount

Skirt: Included



### Lantern Softbox 120

Item No.: LT-120

Dimension:

φ1200mm, 830mm height

φ47.24", 32.68" height

Weight: 1.91kg / 4.21lb

Compatibility: Bowens mount

Skirt: Included



### Umbrella Deep Silver 135

Item No.: U-135DS

Dimension: φ1350 x 880mm / 53.15 x 74.02"

Weight: 0.92kg / 2.03lb



### Umbrella Deep Translucent 165

Item No.: U-165DT

Dimension: φ1650 x 1100mm / 64.96 x 43.31"

Weight: 1.05kg / 2.31lb



### Umbrella Shallow Translucent 180

Item No.: U-180ST

Dimension: φ1800 x 1100mm / 70.87 x 43.31"

Weight: 1.05kg / 2.31lb

# Accessories



**RC-1**  
 NANLITE Bi-color Remote Controller  
 Channel: 512  
 Control Distance: 15M



**WS-RC-C2**  
 NANLINK 2.4G Remote Controller  
 Power Source: CR2032 Button Battery  
 Channel: 12  
 Control Distance: 10M



**WS-TB-1**  
 NANLINK Transmitter Box  
 Dimension: 107 × 73 × 44.5mm  
 4.21 × 2.87 × 1.75"  
 Compatibility: Light Fixture with 2.4G



**CB-DMX-USBC-1/3**  
 DMX Splitter Cable  
 Weight: 0.08kg/0.18lb  
 Length: 242mm/9.53"



**CB-DMX-3.5C-1/2**  
 DMX Adapter Cable  
 Weight: 0.07kg/0.15lb  
 Length: 280mm/11.02"



**CB-DMX-ACP-1/2**  
 DMX Adapter Cable  
 Weight: 0.11kg/0.24lb  
 Length: 340mm/13.39"

**CB-DT/DC**  
 NANLITE D-TAP Cable  
 with DC Socket  
 Compatibility: NANLITE Forza 60,  
 PavoTube series, SA series, etc.



**PA-7.5V2A**  
 NANLITE Power Adapter 7.5V 2A  
 Compatibility:  
 MixPad II 11C, etc.



**CN-58**  
 NANLITE 2-in-1 Reciprocal Battery Charger  
 Not only a charger but also a power bank  
 Input voltage: 5V 2.4A DC  
 Output Voltage: 8.4V (Max 1A) DC, 5V (Max 1A) DC  
 Compatibility: Sony NP-F, NP-FM Series Batteries  
 Power Cord: Included



**BT-BA-V**  
 NANLITE External Battery Base  
 Compatibility: Sony V-mount Battery



**BT-BA-SNP/V**  
 NANLITE V-mount Adapter for Sony Battery  
 Compatibility: Sony NP-F series  
 Battery × 2 pcs



**BT-BA-SNP/DC**  
 Sony NP Battery Adapter with DC Socket



**BT-CGV-14.8V-1**  
 NANLITE Battery Charger  
 for Single 14.8V V-mount Battery  
 Compatibility: 14.8V V-mount Battery



**BT-CGV-26V-1**  
 NANLITE Battery Charger  
 for Single 26V V-mount Battery  
 Compatibility: 26V V-mount Battery



**BT-VBC-14.8V/26V**  
 NANLITE V-mount Battery Converter  
 (Convert the battery from 14.8V to 26V)  
 For Installing the 14.4-14.8V / 12A V-mount  
 battery, allowing you to power fixture with an  
 input voltage of 26V and output of 150W or below.



**BT-CGV-26V-2**  
 NANLITE Battery Charger for  
 Dual 26V V-mount Battery  
 Compatibility: 26V V-mount Battery



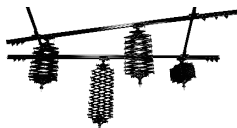
**BT-V-14.8V160**  
 NANLITE V-mount Battery 14.8V 160WH  
 Battery Capacity: 14.8V 160WH  
 Compability: NANLITE Forza 60/60B, Forza 300



**BT-V-26V230 / BT-V-26V270**  
 NANLITE V-mount Battery 26V 230WH / 26V 270WH  
 Battery Capacity: 26V 230WH / 26V 270WH  
 Compatibility:  
 NANLITE Forza 300, Forza 500, MixPanel 150 etc.



**BT-SNP-6AA**  
 NANLITE Sony NP-F Mount Adapter  
 for 6 pcs AA Batteries  
 Compatibility: LED Light with Sony NP-F Mount



**CN-D4**  
 NANLITE Professional Rail System  
 Dimension: 3 x 3m / 9.84 x 9.84ft



**AS-MT/HG-1/4**  
 Mini Tripod & Hand Grip with 1/4 Screw  
 Rotation Angle: 0°-120°  
 Dimension: 120 x 40mm / 4.72 x 1.57"  
 Compatibility: The Light with 1/4"-20 Mount Receiver

## Accessories *PROFESSIONAL CARRYING CASE*



**CC-P-38**  
 Plastic Carry Case  
 Material: ABS  
 Dimension:  
 47 x 24 x 34cm / 18.50 x 9.45 x 13.39"  
 Weight: About 2kg / 4.41lb



**CC-ST-85**  
 Trolley Case  
 Material: Cloth, MDF  
 Dimension:  
 61 x 34 x 59cm / 24.02 x 13.39 x 23.23"  
 Weight: About 7.2kg / 15.87lb  
 Packed Item: 600/900/1200 series x 3 pcs  
 LS-216-5/8 / LS-186-5/8 x 3 pcs



**CC-PT-37**  
 Plastic Trolley Case  
 Material: ABS  
 Inner Dimension:  
 51 x 29 x 24cm / 20.08 x 11.42 x 9.45"  
 Outer Dimension:  
 56 x 35.5 x 29cm / 22.05 x 13.98 x 11.42"  
 Weight: About 2kg / 4.41lb



**CC-PT-62**  
 Plastic Trolley Case  
 Material: ABS  
 Inner Dimension: 58.1 x 36 x 29.8cm /  
 22.87 x 14.17 x 11.73"  
 Outer Dimension: 62.5 x 35.9 x 44.8cm /  
 24.61 x 14.13 x 17.64"  
 Weight: About 2.3kg / 5.07lb



**CC-S-FS**  
 Carry Case for FS Series  
 Material: Oxford Cloth  
 Dimension:  
 50 x 27 x 24cm / 19.69 x 10.63 x 9.45"  
 Weight: 1.39kg / 3.06lb  
 Compatibility:  
 FS-150/150B/200/200B/300/300B



**CC-ST-FZ300II-2KIT**  
 Trolley case for Forza 300/300B II 2KIT  
 Material:  
 Hollow board, PE Foam, Plank, Oxford fabric  
 Dimension:  
 635 x 435 x 310mm / 25.0 x 17.1 x 12.2"  
 Weight:  
 6.9kg / 15.21lb



**CC-ST-FZ500II-2KIT**  
 Trolley case for Forza 500/500B II 2KIT  
 Material:  
 Hollow board, PE Foam, Plank, Oxford fabric  
 Dimension:  
 660 x 450 x 370mm / 26.0 x 17.7 x 14.6"  
 Weight:  
 10.5kg / 23.1lb



**CC-ST-FZ720**  
 Trolley case for Forza 720/720B  
 Material: Hollow board, PE Foam,  
 Plank, Oxford fabric  
 Dimension:  
 620 x 350 x 305mm / 24.41 x 13.78 x 12"  
 Weight: 6kg / 13.23lb

# Accessories GREEN SCREEN CHROMA KEY STUDIO LIGHTING KIT



## LG-E60 LED Studio Light

Dimension:  
605 × 65 × 50mm / 23.82 × 2.56 × 1.97"  
Weight: 0.65kg / 1.43lb  
Rated Power: 14W  
Input Voltage/Current:  
DC12V/2A Max, AC100-240V 50/60Hz



## LG-1822U Green Screen Chroma Key Backdrop Kit

Material: Aluminum, Cloth  
Green Background Cloth Dimension: 180 × 220mm



## LG-3522U Green Screen Chroma Key Backdrop Kit

Material: Aluminum, Cloth  
Green Background Cloth Dimension: 350 × 220mm

# Accessories LIGHT STAND



## LS-170-5/8

Material: Iron  
Setting Height:  
About 73-170cm / 28.74-66.93"  
Weight: About 3kg / 6.6lb



## LS-186-5/8

Material: Aluminum Alloy  
Setting Height:  
About 49-186cm / 19.29-73.23"  
Weight: About 5kg / 11.02lb



## LS-288-5/8

Material: Iron Pipe  
and Aluminum Section  
Setting Height:  
About 108-290cm / 42.52-114.17"  
Weight: About 6kg / 13.23lb



## LS-300-HD

Material: Aluminum Alloy  
Setting Height:  
About 140-310cm / 55.12-122.05"  
Weight: About 8kg / 17.64lb



## LS-C-330-5/8

Material: Aluminum Alloy  
Setting Height:  
About 145-328cm / 57.09-129.13"  
Weight: About 8.1kg / 17.86lb

# Backdrop Elevator Series



**BE-RC**  
Radio Controller  
Supply Voltage: 220V / 110V  
Control Distance: 15M



**BE-U1**  
Electric Expander Set

**BE-RR**  
Radio Receiver



**BE-R3**  
Assembled Tube set  
Diameter:  $\phi 5.1\text{cm} / 2.01''$   
Assembled Length: 300cm / 118.11"  
Length of Each Bar: 100cm / 39.37"  
Suitable for hanging up manual control or electric background support elevator



**BE-3R**  
3-axle remote control electric background support elevator kit  
Suitable for mounting on the wall or ceiling



**BE-4R**  
4-axle remote control electric background support elevator kit  
Suitable for mounting on the wall or ceiling



**BE-6R**  
6-axle remote control electric background support elevator kit  
Suitable for mounting on the wall or ceiling



**BE-2RS**  
2-axle remote control electric background support elevator kit  
Holder Hooks: Included  
Suitable for mounting on the wall, ceiling or lighting stand



**BE-3RS**  
3-axle remote control electric background support elevator kit  
Holder Hooks: Included  
Suitable for mounting on the wall, ceiling or lighting stand



**BE-4RS**  
4-axle remote control electric background support elevator kit  
Holder Hooks: Included  
Suitable for mounting on the wall, ceiling or lighting stand



**BE-1**  
1-axle manual background support kit  
Suitable for mounting on the lighting stand



**BE-2**  
2-axle manual background support kit  
Suitable for mounting on the lighting stand



**BE-3**  
3-axle manual background support kit  
Suitable for mounting on the lighting stand



**BE-4**  
4-axle manual background support kit  
Suitable for mounting on the lighting stand



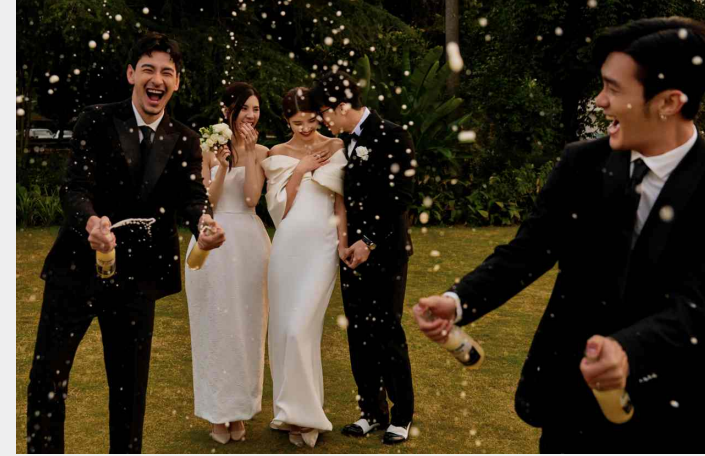
**BE-6**  
6-axle manual background support kit  
Suitable for mounting on the lighting stand



**BE-SK1**  
Background Support Stand  
Max. Height: 286cm / 112.60"  
Length: 300cm / 118.11"  
Length of Each Cross Bar: 100cm / 39.37"



© Jordi Koalitic



© Simon Kither



© JGabrielius Jauniskis



© Amanda Campeanu



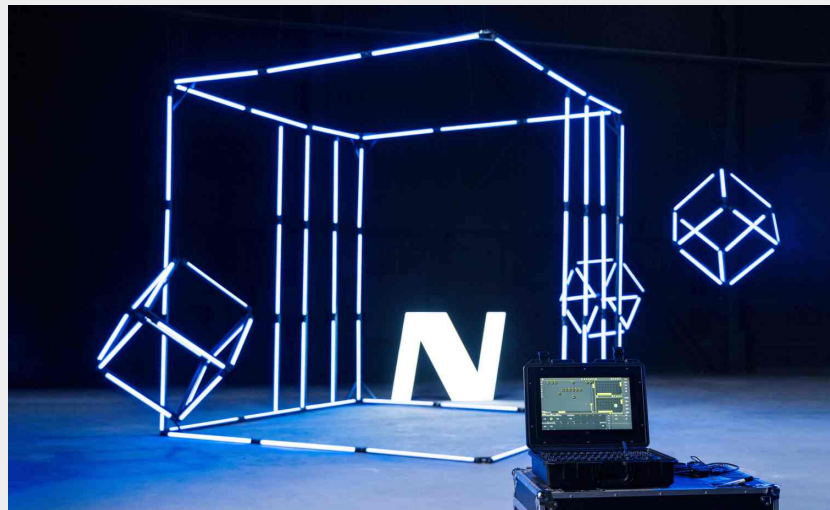
© Simone Ferretti



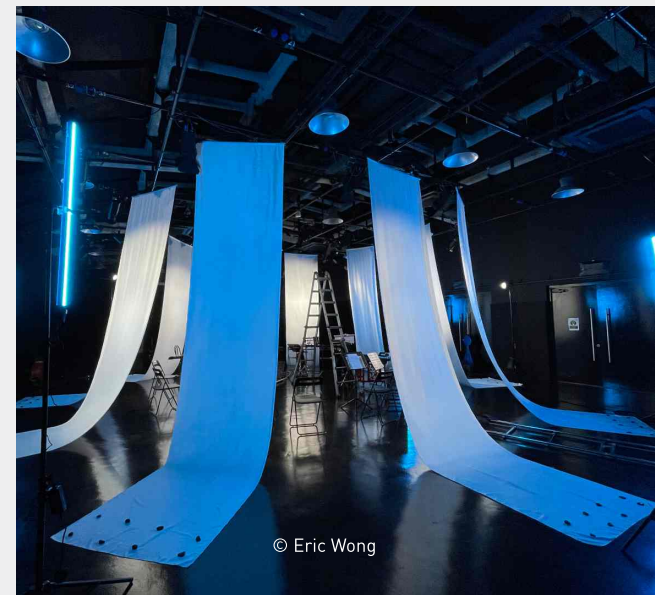
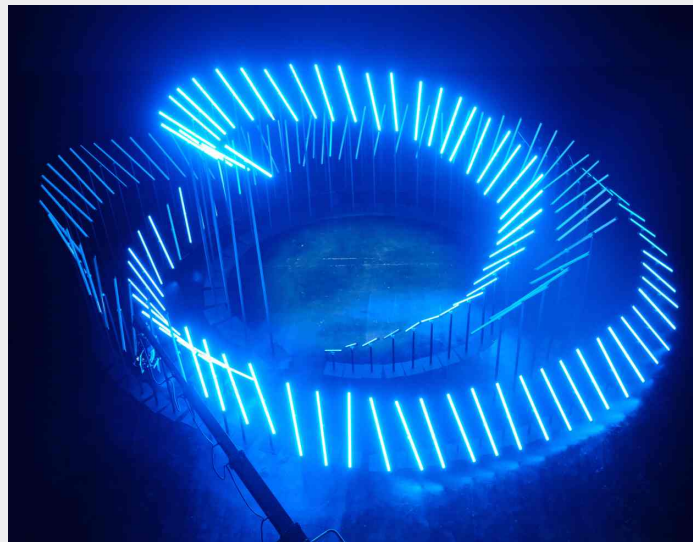
“  
부터 마지막 장면까지  
말아름답고 따뜻했다.”



© Polina Washington



© Chris Knight



© Eric Wong

# GUANGDONG NANGUANG PHOTO&VIDEO SYSTEMS CO., LTD.

Tel: +86-754-85751187 85310187

Fax: +86-754-85300887

E-mail: info@nanlite.com

Service Mail: service@nanlite.com

Add: Dongli Section, Highway 324, Chenghai, Shantou City, Guangdong Province, China



[www.nanlite.com](http://www.nanlite.com)



NANLINK APP  
Download



NANLITE  
Catalogue



NANLITE  
Linktree